



NCKX4 Polyclonal Antibody

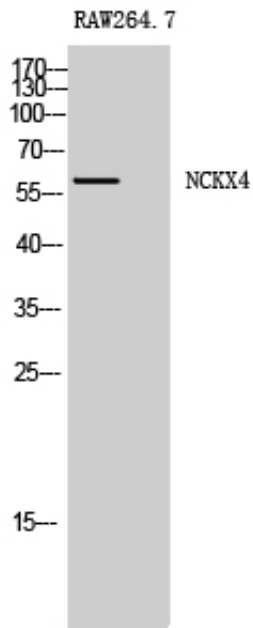
Catalog_no :	AT2994
Applications :	WB,ELISA
Reactivity :	Human,Mouse,Rat
Category :	抗原抗体
Size :	100µg/50µg/20µg
Gene_name :	SLC24A4
Protein_name :	Sodium/potassium/calcium exchanger 4
Humangene_id :	123041
Humanswissprot_no :	Q8NFF2
Mousegene_id :	238384
Mouseswissprot_no :	Q8CGQ8
Immunogen :	The antiserum was produced against synthesized peptide derived from human SLC24A4. AA range:328-377
Specificity :	NCKX4 Polyclonal Antibody detects endogenous levels of NCKX4 protein.
Formulation :	Liquid in PBS containing 50% glycerol, 0.5% BSA and 0.02% sodium azide.
Source :	Rabbit
Dilution :	Western Blot: 1/500 - 1/2000. ELISA: 1/40000. Not yet tested in other applications.
Purification :	The antibody was affinity-purified from rabbit antiserum by affinity-chromatography using epitope-specific immunogen.
Concentration :	1 mg/ml
Storage_stability :	-20°C/1 year
Msds :	MSDS_Antibody.pdf
Other_name :	SLC24A4; NCKX4; Sodium/potassium/calcium exchanger 4; Na(+)/K(+)/Ca(2+)-exchange protein 4; Solute carrier family 24 member 4
Molecular Weight :	60KD



专注二抗产品

Biodragon旗下品牌

Product Images



Western Blot analysis of RAW264.7 cells using NCKX4 Polyclonal Antibody