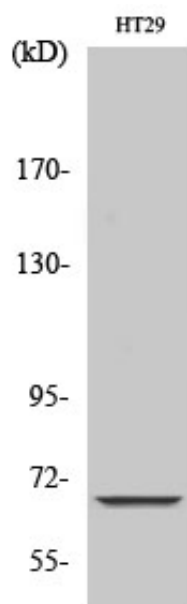




ND5 Polyclonal Antibody

Catalog_no :	AT3001
Applications :	WB,ELISA
Reactivity :	Human
Category :	抗原抗体
Size :	100µg/50µg/20µg
Gene_name :	MT-ND5
Protein_name :	NADH-ubiquinone oxidoreductase chain 5
Humangene_id :	4540
Humanswissprot_no :	P03915
Immunogen :	The antiserum was produced against synthesized peptide derived from human MT-ND5. AA range:328-377
Specificity :	ND5 Polyclonal Antibody detects endogenous levels of ND5 protein.
Formulation :	Liquid in PBS containing 50% glycerol, 0.5% BSA and 0.02% sodium azide.
Source :	Rabbit
Dilution :	Western Blot: 1/500 - 1/2000. ELISA: 1/10000. Not yet tested in other applications.
Purification :	The antibody was affinity-purified from rabbit antiserum by affinity-chromatography using epitope-specific immunogen.
Concentration :	1 mg/ml
Storage_stability :	-20°C/1 year
Msds :	MSDS_Antibody.pdf
Other_name :	MT-ND5; MTND5; NADH5; ND5; NADH-ubiquinone oxidoreductase chain 5; NADH dehydrogenase subunit 5
Molecular Weight :	70KD

Product Images



Western Blot analysis of various cells using ND5 Polyclonal Antibody diluted at 1 : 1000