



## NDR2 Polyclonal Antibody

Catalog_no :	AT3003
Applications :	WB,IHC-p,ELISA
Reactivity :	Human,Mouse,Rat
Category :	抗原抗体
Size :	100µg/50µg/20µg
Gene_name :	STK38L
Protein_name :	Serine/threonine-protein kinase 38-like
Humangene_id :	<a href="#">23012</a>
Humanswissprot_no :	<a href="#">Q9Y2H1</a>
Mousegene_id :	<a href="#">232533</a>
Mouseswissprot_no :	<a href="#">Q7TSE6</a>
Immunogen :	Synthesized peptide derived from NDR2 . at AA range: 380-460
Specificity :	NDR2 Polyclonal Antibody detects endogenous levels of NDR2 protein.
Formulation :	Liquid in PBS containing 50% glycerol, 0.5% BSA and 0.02% sodium azide.
Source :	Rabbit
Dilution :	Western Blot: 1/500 - 1/2000.IHC-p:1:50-300 ELISA: 1/20000. Not yet tested in other applications.
Purification :	The antibody was affinity-purified from rabbit antiserum by affinity-chromatography using epitope-specific immunogen.
Concentration :	1 mg/ml
Storage_stability :	-20°C/1 year
Msd :	MSDS_Antibody.pdf
Other_name :	STK38L; KIAA0965; NDR2; Serine/threonine-protein kinase 38-like; NDR2 protein kinase; Nuclear Dbf2-related kinase 2
Molecular Weight :	54KD

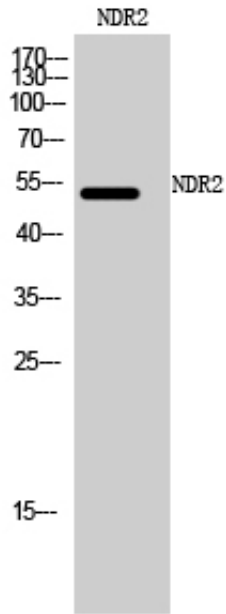


**专注二抗产品**

Biodragon旗下品牌

---

## Product Images



Western Blot analysis of mouse cells using NDR2 Polyclonal Antibody