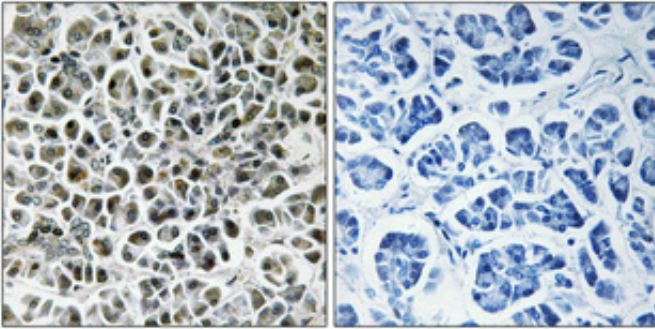


## NDUFA3 Polyclonal Antibody

|                     |                                                                                                                                      |
|---------------------|--------------------------------------------------------------------------------------------------------------------------------------|
| Catalog_no :        | AT3007                                                                                                                               |
| Applications :      | IHC-p,ELISA                                                                                                                          |
| Reactivity :        | Human,Mouse                                                                                                                          |
| Category :          | 抗原抗体                                                                                                                                 |
| Size :              | 100µg/50µg/20µg                                                                                                                      |
| Gene_name :         | NDUFA3                                                                                                                               |
| Protein_name :      | NADH dehydrogenase [ubiquinone] 1 alpha subcomplex subunit 3                                                                         |
| Humangene_id :      | <a href="#">4696</a>                                                                                                                 |
| Humanswissprot_no : | <a href="#">O95167</a>                                                                                                               |
| Mousegene_id :      | <a href="#">66091</a>                                                                                                                |
| Mouseswissprot_no : | <a href="#">Q9CQ91</a>                                                                                                               |
| Immunogen :         | The antiserum was produced against synthesized peptide derived from human NDUFA3. AA range:34-83                                     |
| Specificity :       | NDUFA3 Polyclonal Antibody detects endogenous levels of NDUFA3 protein.                                                              |
| Formulation :       | Liquid in PBS containing 50% glycerol, 0.5% BSA and 0.02% sodium azide.                                                              |
| Source :            | Rabbit                                                                                                                               |
| Dilution :          | Immunohistochemistry: 1/100 - 1/300. ELISA: 1/40000. Not yet tested in other applications.                                           |
| Purification :      | The antibody was affinity-purified from rabbit antiserum by affinity-chromatography using epitope-specific immunogen.                |
| Concentration :     | 1 mg/ml                                                                                                                              |
| Storage_stability : | -20°C/1 year                                                                                                                         |
| Msds :              | MSDS_Antibody.pdf                                                                                                                    |
| Other_name :        | NDUFA3; NADH dehydrogenase [ubiquinone] 1 alpha subcomplex subunit 3; Complex I-B9; CI-B9; NADH-ubiquinone oxidoreductase B9 subunit |

## Product Images



Immunohistochemical analysis of paraffin-embedded Human pancreas. Antibody was diluted at 1:100(4°,overnight). High-pressure and temperature Tris-EDTA,pH8.0 was used for antigen retrieval. Negative contrl (right) obtaned from antibody was pre-absorbed by immunogen peptide.