

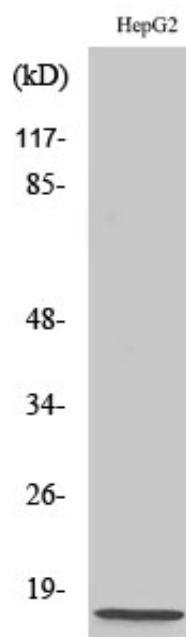
NDUFA4 Polyclonal Antibody

Catalog_no :	AT3008
Applications :	WB,IHC-p,ELISA
Reactivity :	Human,Mouse,Rat
Category :	抗原抗体
Size :	100µg/50µg/20µg
Gene_name :	NDUFA4
Protein_name :	NADH dehydrogenase [ubiquinone] 1 alpha subcomplex subunit 4
Humangene_id :	4697
Humanswissprot_no :	O00483
Mousegene_id :	17992
Mouseswissprot_no :	Q62425
Immunogen :	The antiserum was produced against synthesized peptide derived from human NDUFA4. AA range:32-81
Specificity :	NDUFA4 Polyclonal Antibody detects endogenous levels of NDUFA4 protein.
Formulation :	Liquid in PBS containing 50% glycerol, 0.5% BSA and 0.02% sodium azide.
Source :	Rabbit
Dilution :	Western Blot: 1/500 - 1/2000. Immunohistochemistry: 1/100 - 1/300. ELISA: 1/10000. Not yet tested in other applications.
Purification :	The antibody was affinity-purified from rabbit antiserum by affinity-chromatography using epitope-specific immunogen.
Concentration :	1 mg/ml
Storage_stability :	-20°C/1 year
Msds :	MSDS_Antibody.pdf
Other_name :	NDUFA4; NADH dehydrogenase [ubiquinone] 1 alpha subcomplex subunit 4; Complex I-MLRQ; CI-MLRQ; NADH-ubiquinone oxidoreductase MLRQ subunit
Molecular	9KD

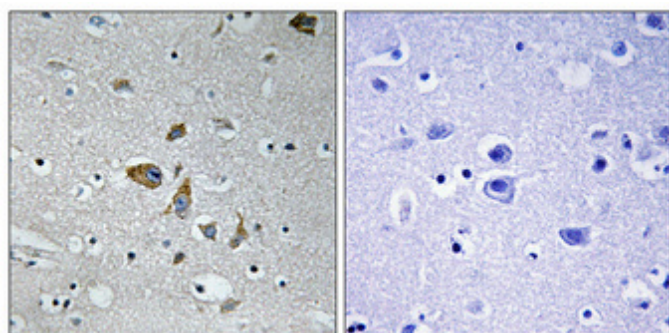


Weight :

Product Images



Western Blot analysis of various cells using NDUFA4 Polyclonal Antibody



Immunohistochemical analysis of paraffin-embedded Human brain. Antibody was diluted at 1:100(4°,overnight). High-pressure and temperature Tris-EDTA,pH8.0 was used for antigen retrieval. Negative contrl (right) obtaned from antibody was pre-absorbed by immunogen peptide.