



NDUFA4L2 Polyclonal Antibody

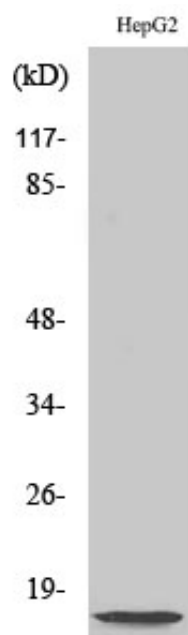
Catalog_no :	AT3009
Applications :	WB,ELISA
Reactivity :	Human,Mouse
Category :	抗原抗体
Size :	100µg/50µg/20µg
Gene_name :	NDUFA4L2
Protein_name :	NADH dehydrogenase [ubiquinone] 1 alpha subcomplex subunit 4-like 2
Humangene_id :	56901
Humanswissprot_no :	Q9NRX3
Mousegene_id :	407790
Mouseswissprot_no :	Q4FZG9
Immunogen :	The antiserum was produced against synthesized peptide derived from human NDUFA4L2. AA range:38-87
Specificity :	NDUFA4L2 Polyclonal Antibody detects endogenous levels of NDUFA4L2 protein.
Formulation :	Liquid in PBS containing 50% glycerol, 0.5% BSA and 0.02% sodium azide.
Source :	Rabbit
Dilution :	Western Blot: 1/500 - 1/2000. ELISA: 1/20000. Not yet tested in other applications.
Purification :	The antibody was affinity-purified from rabbit antiserum by affinity-chromatography using epitope-specific immunogen.
Concentration :	1 mg/ml
Storage_stability :	-20°C/1 year
Msds :	MSDS_Antibody.pdf
Other_name :	NDUFA4L2; NADH dehydrogenase [ubiquinone] 1 alpha subcomplex subunit 4-like 2; NADH-ubiquinone oxidoreductase MLRQ subunit homolog; NUOMS
Molecular Weight :	15KD



专注二抗产品

Biodragon旗下品牌

Product Images



Western Blot analysis of various cells using NDUFA4L2 Polyclonal Antibody diluted at 1 : 2000