

NDUFA8 Polyclonal Antibody

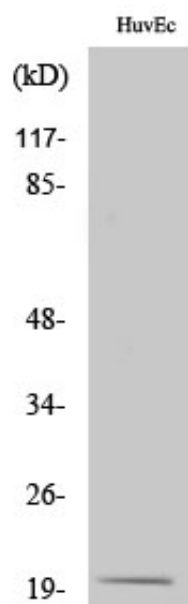
Catalog_no :	AT3010
Applications :	WB,IHC-p,ELISA
Reactivity :	Human,Mouse
Category :	抗原抗体
Size :	100µg/50µg/20µg
Gene_name :	NDUFA8
Protein_name :	NADH dehydrogenase [ubiquinone] 1 alpha subcomplex subunit 8
Humangene_id :	4702
Humanswissprot_no :	P51970
Mousegene_id :	68375
Mouseswissprot_no :	Q9DCJ5
Immunogen :	The antiserum was produced against synthesized peptide derived from human NDUFA8. AA range:109-158
Specificity :	NDUFA8 Polyclonal Antibody detects endogenous levels of NDUFA8 protein.
Formulation :	Liquid in PBS containing 50% glycerol, 0.5% BSA and 0.02% sodium azide.
Source :	Rabbit
Dilution :	Western Blot: 1/500 - 1/2000. Immunohistochemistry: 1/100 - 1/300. ELISA: 1/40000. Not yet tested in other applications.
Purification :	The antibody was affinity-purified from rabbit antiserum by affinity-chromatography using epitope-specific immunogen.
Concentration :	1 mg/ml
Storage_stability :	-20°C/1 year
Msds :	MSDS_Antibody.pdf
Other_name :	NDUFA8; NADH dehydrogenase [ubiquinone] 1 alpha subcomplex subunit 8; Complex I-19kD; CI-19kD; Complex I-PGIV; CI-PGIV; NADH-ubiquinone oxidoreductase 19 kDa subunit



Molecular
Weight :

22KD

Product Images



Western Blot analysis of various cells using NDUFA8 Polyclonal Antibody diluted at 1 : 1000