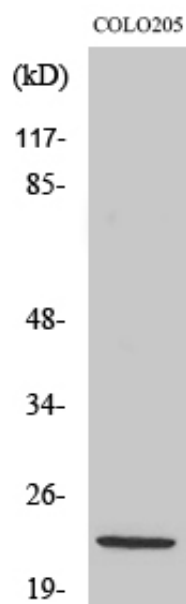


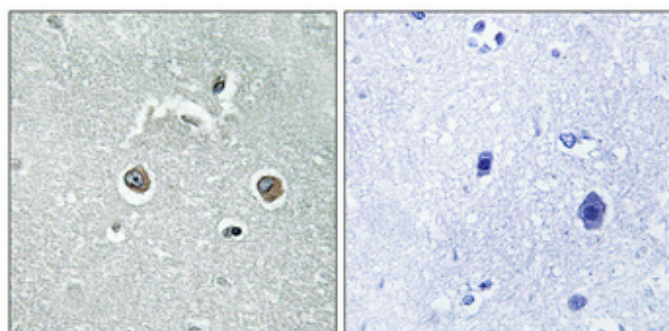
NDUFB10 Polyclonal Antibody

| | |
|---------------------|---|
| Catalog_no : | AT3013 |
| Applications : | WB,IHC-p,ELISA |
| Reactivity : | Human |
| Category : | 抗原抗体 |
| Size : | 100µg/50µg/20µg |
| Gene_name : | NDUFB10 |
| Protein_name : | NADH dehydrogenase [ubiquinone] 1 beta subcomplex subunit 10 |
| Humangene_id : | 4716 |
| Humanswissprot_no : | O96000 |
| Immunogen : | The antiserum was produced against synthesized peptide derived from human NDUFB10. AA range:63-112 |
| Specificity : | NDUFB10 Polyclonal Antibody detects endogenous levels of NDUFB10 protein. |
| Formulation : | Liquid in PBS containing 50% glycerol, 0.5% BSA and 0.02% sodium azide. |
| Source : | Rabbit |
| Dilution : | Western Blot: 1/500 - 1/2000. Immunohistochemistry: 1/100 - 1/300. ELISA: 1/40000. Not yet tested in other applications. |
| Purification : | The antibody was affinity-purified from rabbit antiserum by affinity-chromatography using epitope-specific immunogen. |
| Concentration : | 1 mg/ml |
| Storage_stability : | -20°C/1 year |
| Msds : | MSDS_Antibody.pdf |
| Other_name : | NDUFB10; NADH dehydrogenase [ubiquinone] 1 beta subcomplex subunit 10; Complex I-PDSW; CI-PDSW; NADH-ubiquinone oxidoreductase PDSW subunit |
| Molecular Weight : | 24KD |

Product Images



Western Blot analysis of various cells using NDUF10 Polyclonal Antibody



Immunohistochemical analysis of paraffin-embedded Human brain. Antibody was diluted at 1:100(4°,overnight). High-pressure and temperature Tris-EDTA,pH8.0 was used for antigen retrieval. Negative contrl (right) obtaned from antibody was pre-absorbed by immunogen peptide.