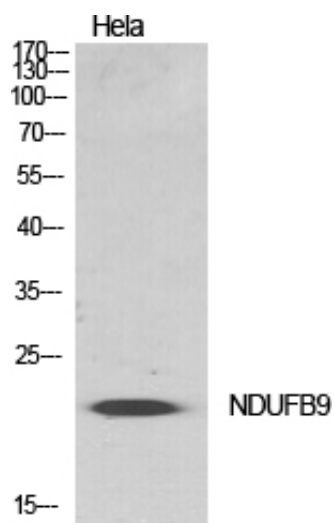


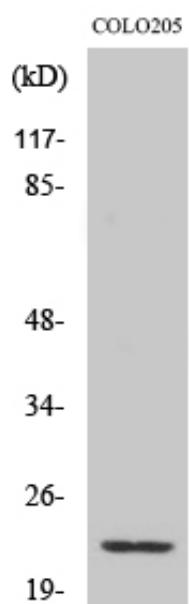
## NDUFB9 Polyclonal Antibody

Catalog_no :	AT3014
Applications :	WB,IHC-p,ELISA
Reactivity :	Human
Category :	抗原抗体
Size :	100µg/50µg/20µg
Gene_name :	NDUFB9
Protein_name :	NADH dehydrogenase [ubiquinone] 1 beta subcomplex subunit 9
Humangene_id :	<a href="#">4715</a>
Humanswissprot_no :	<a href="#">Q9Y6M9</a>
Immunogen :	The antiserum was produced against synthesized peptide derived from human NDUFB9. AA range:102-151
Specificity :	NDUFB9 Polyclonal Antibody detects endogenous levels of NDUFB9 protein.
Formulation :	Liquid in PBS containing 50% glycerol, 0.5% BSA and 0.02% sodium azide.
Source :	Rabbit
Dilution :	Western Blot: 1/500 - 1/2000. Immunohistochemistry: 1/100 - 1/300. ELISA: 1/10000. Not yet tested in other applications.
Purification :	The antibody was affinity-purified from rabbit antiserum by affinity-chromatography using epitope-specific immunogen.
Concentration :	1 mg/ml
Storage_stability :	-20°C/1 year
Msds :	MSDS_Antibody.pdf
Other_name :	NDUFB9; LYRM3; UQOR22; NADH dehydrogenase [ubiquinone] 1 beta subcomplex subunit 9; Complex I-B22; CI-B22; LYR motif-containing protein 3; NADH-ubiquinone oxidoreductase B22 subunit
Molecular Weight :	22KD

## Product Images



Western Blot analysis of various cells using NDUF9 Polyclonal Antibody diluted at 1 : 500



Western Blot analysis of 293 cells using NDUF9 Polyclonal Antibody diluted at 1 : 500