

NDUFV2 Polyclonal Antibody

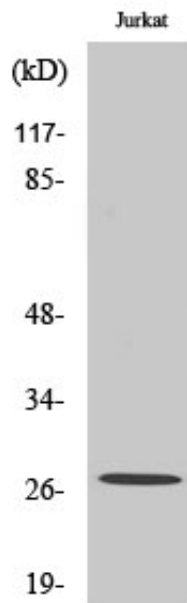
Catalog_no :	AT3022
Applications :	WB,IHC-p,ELISA
Reactivity :	Human,Mouse,Rat
Category :	抗原抗体
Size :	100µg/50µg/20µg
Gene_name :	NDUFV2
Protein_name :	NADH dehydrogenase [ubiquinone] flavoprotein 2 mitochondrial
Humangene_id :	4729
Humanswissprot_no :	P19404
Mousegene_id :	72900
Mouseswissprot_no :	Q9D6J6
Ratgene_id :	81728
Ratswissprot_no :	P19234
Immunogen :	The antiserum was produced against synthesized peptide derived from human NDUFV2. AA range:20-69
Specificity :	NDUFV2 Polyclonal Antibody detects endogenous levels of NDUFV2 protein.
Formulation :	Liquid in PBS containing 50% glycerol, 0.5% BSA and 0.02% sodium azide.
Source :	Rabbit
Dilution :	Western Blot: 1/500 - 1/2000. Immunohistochemistry: 1/100 - 1/300. ELISA: 1/40000. Not yet tested in other applications.
Purification :	The antibody was affinity-purified from rabbit antiserum by affinity-chromatography using epitope-specific immunogen.
Concentration :	1 mg/ml
Storage_stability :	-20°C/1 year
Msds :	MSDS_Antibody.pdf



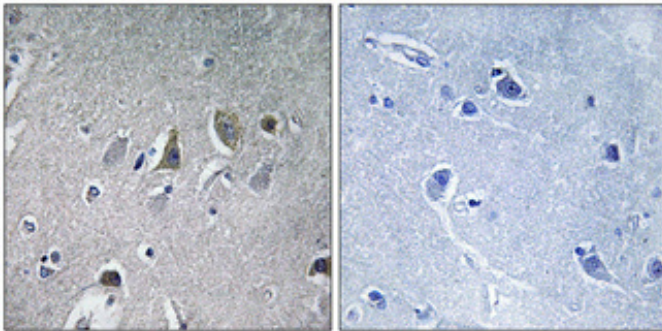
Other_name : NDUFV2; NADH dehydrogenase [ubiquinone] flavoprotein 2; mitochondrial; NADH-ubiquinone oxidoreductase 24 kDa subunit

Molecular Weight : 27KD

Product Images



Western Blot analysis of various cells using NDUFV2 Polyclonal Antibody



Immunohistochemical analysis of paraffin-embedded Human brain. Antibody was diluted at 1:100(4°,overnight). High-pressure and temperature Tris-EDTA,pH8.0 was used for antigen retrieval. Negative contrl (right) obtaned from antibody was pre-absorbed by immunogen peptide.