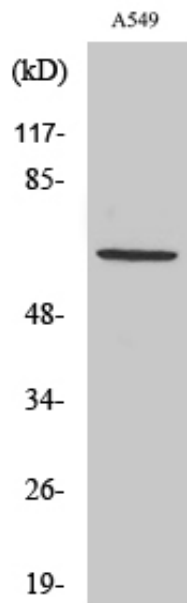


Nectin 3 Polyclonal Antibody

Catalog_no :	AT3024
Applications :	WB,ELISA
Reactivity :	Human,Mouse
Category :	抗原抗体
Size :	100µg/50µg/20µg
Gene_name :	PVRL3
Protein_name :	Poliovirus receptor-related protein 3
Humangene_id :	25945
Humanswissprot_no :	Q9NQ53
Mousegene_id :	58998
Mouseswissprot_no :	Q9JLB9
Immunogen :	The antiserum was produced against synthesized peptide derived from human PVRL3. AA range:184-233
Specificity :	Nectin 3 Polyclonal Antibody detects endogenous levels of Nectin 3 protein.
Formulation :	Liquid in PBS containing 50% glycerol, 0.5% BSA and 0.02% sodium azide.
Source :	Rabbit
Dilution :	Western Blot: 1/500 - 1/2000. ELISA: 1/5000. Not yet tested in other applications.
Purification :	The antibody was affinity-purified from rabbit antiserum by affinity-chromatography using epitope-specific immunogen.
Concentration :	1 mg/ml
Storage_stability :	-20°C/1 year
Msd :	MSDS_Antibody.pdf
Other_name :	PVRL3; PRR3; Poliovirus receptor-related protein 3; CDw113; Nectin-3; CD antigen CD113
Molecular Weight :	61KD

Product Images



Western Blot analysis of various cells using Nectin 3 Polyclonal Antibody