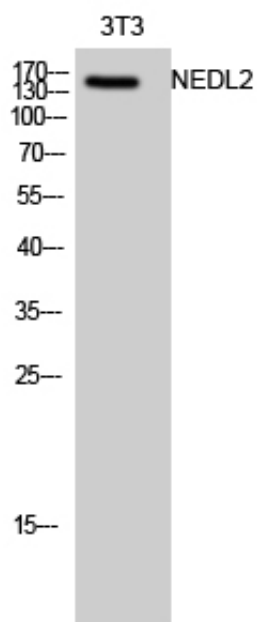


## NEDL2 Polyclonal Antibody

Catalog_no :	AT3027
Applications :	WB,ELISA
Reactivity :	Human
Category :	抗原抗体
Size :	100µg/50µg/20µg
Gene_name :	HECW2
Protein_name :	E3 ubiquitin-protein ligase HECW2
Humangene_id :	<a href="#">57520</a>
Humanswissprot_no :	<a href="#">Q9P2P5</a>
Immunogen :	The antiserum was produced against synthesized peptide derived from human HECW2. AA range:481-530
Specificity :	NEDL2 Polyclonal Antibody detects endogenous levels of NEDL2 protein.
Formulation :	Liquid in PBS containing 50% glycerol, 0.5% BSA and 0.02% sodium azide.
Source :	Rabbit
Dilution :	Western Blot: 1/500 - 1/2000. ELISA: 1/10000. Not yet tested in other applications.
Purification :	The antibody was affinity-purified from rabbit antiserum by affinity-chromatography using epitope-specific immunogen.
Concentration :	1 mg/ml
Storage_stability :	-20°C/1 year
Msds :	MSDS_Antibody.pdf
Other_name :	HECW2; KIAA1301; NEDL2; E3 ubiquitin-protein ligase HECW2; HECT; C2 and WW domain-containing protein 2; NEDD4-like E3 ubiquitin-protein ligase 2
Molecular Weight :	140-150KD

## Product Images



Western Blot analysis of 3T3 cells using NEDL2  
Polyclonal Antibody diluted at 1 : 1000