



NEEP21 Polyclonal Antibody

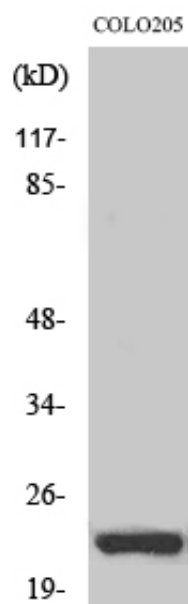
Catalog_no :	<u>AT3028</u>
Applications :	<u>WB,IHC-p,ELISA</u>
Reactivity :	<u>Human,Mouse,Rat</u>
Category :	<u>抗原抗体</u>
Size :	<u>100µg/50µg/20µg</u>
Gene_name :	<u>NSG1</u>
Protein_name :	<u>Neuron-specific protein family member 1</u>
Humangene_id :	<u>27065</u>
Humanswissprot_no :	<u>P42857</u>
Mousegene_id :	<u>18196</u>
Mouseswissprot_no :	<u>Q62092</u>
Ratgene_id :	<u>25247</u>
Ratswissprot_no :	<u>P02683</u>
Immunogen :	<u>The antiserum was produced against synthesized peptide derived from human NSG1. AA range:112-161</u>
Specificity :	<u>NEEP21 Polyclonal Antibody detects endogenous levels of NEEP21 protein.</u>
Formulation :	<u>Liquid in PBS containing 50% glycerol, 0.5% BSA and 0.02% sodium azide.</u>
Source :	<u>Rabbit</u>
Dilution :	<u>Western Blot: 1/500 - 1/2000. Immunohistochemistry: 1/100 - 1/300. ELISA: 1/20000. Not yet tested in other applications.</u>
Purification :	<u>The antibody was affinity-purified from rabbit antiserum by affinity-chromatography using epitope-specific immunogen.</u>
Concentration :	<u>1 mg/ml</u>
Storage_stability :	<u>-20°C/1 year</u>
Msds :	<u>MSDS_Antibody.pdf</u>



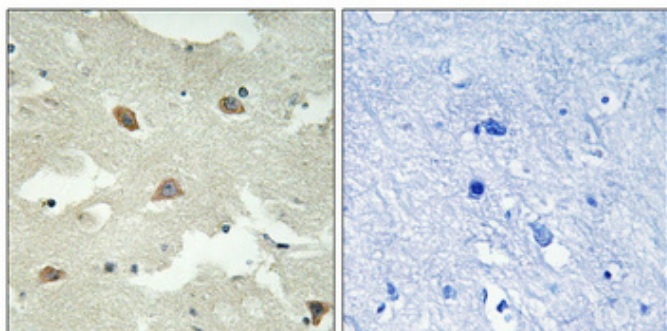
Other_name : NSG1; D4S234; Neuron-specific protein family member 1; Brain neuron cytoplasmic protein 1

Molecular Weight : 26KD

Product Images



Western Blot analysis of various cells using NEEP21 Polyclonal Antibody diluted at 1 : 2000



Immunohistochemical analysis of paraffin-embedded Human brain. Antibody was diluted at 1:100(4°,overnight). High-pressure and temperature Tris-EDTA,pH8.0 was used for antigen retrieval. Negative contrl (right) obtaned from antibody was pre-absorbed by immunogen peptide.