

NEGR1 Polyclonal Antibody

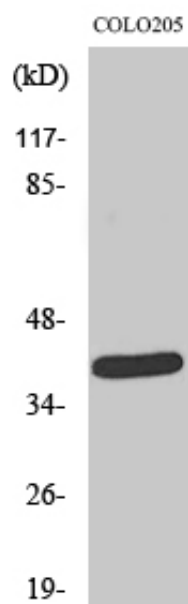
Catalog_no :	AT3029
Applications :	WB,ELISA
Reactivity :	Human,Mouse,Rat
Category :	抗原抗体
Size :	100µg/50µg/20µg
Gene_name :	NEGR1
Protein_name :	Neuronal growth regulator 1
Humangene_id :	257194
Humanswissprot_no :	Q7Z3B1
Mousegene_id :	320840
Mouseswissprot_no :	Q80Z24
Ratgene_id :	59318
Ratswissprot_no :	Q9Z0J8
Immunogen :	The antiserum was produced against synthesized peptide derived from human NEGR1. AA range:172-221
Specificity :	NEGR1 Polyclonal Antibody detects endogenous levels of NEGR1 protein.
Formulation :	Liquid in PBS containing 50% glycerol, 0.5% BSA and 0.02% sodium azide.
Source :	Rabbit
Dilution :	Western Blot: 1/500 - 1/2000. ELISA: 1/20000. Not yet tested in other applications.
Purification :	The antibody was affinity-purified from rabbit antiserum by affinity-chromatography using epitope-specific immunogen.
Concentration :	1 mg/ml
Storage_stability :	-20°C/1 year
Msds :	MSDS_Antibody.pdf



Other_name : NEGR1; IGLON4; Neuronal growth regulator 1; IglON family member 4

Molecular Weight : 35KD

Product Images



Western Blot analysis of various cells using NEGR1 Polyclonal Antibody