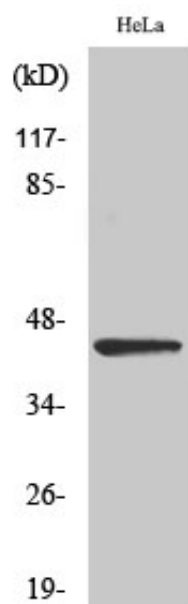


## NEIL1 Polyclonal Antibody

Catalog_no :	AT3030
Applications :	WB,ELISA
Reactivity :	Human
Category :	抗原抗体
Size :	100µg/50µg/20µg
Gene_name :	NEIL1
Protein_name :	Endonuclease 8-like 1
Humangene_id :	<a href="#">79661</a>
Humanswissprot_no :	<a href="#">Q96FI4</a>
Immunogen :	The antiserum was produced against synthesized peptide derived from human NEIL1. AA range:291-340
Specificity :	NEIL1 Polyclonal Antibody detects endogenous levels of NEIL1 protein.
Formulation :	Liquid in PBS containing 50% glycerol, 0.5% BSA and 0.02% sodium azide.
Source :	Rabbit
Dilution :	Western Blot: 1/500 - 1/2000. ELISA: 1/20000. Not yet tested in other applications.
Purification :	The antibody was affinity-purified from rabbit antiserum by affinity-chromatography using epitope-specific immunogen.
Concentration :	1 mg/ml
Storage_stability :	-20°C/1 year
Msds :	MSDS_Antibody.pdf
Other_name :	NEIL1; Endonuclease 8-like 1; DNA glycosylase/AP lyase Neil1; DNA-(apurinic or apyrimidinic site) lyase Neil1; Endonuclease VIII-like 1; FPG1; Nei homolog 1; NEH1; Nei-like protein 1
Molecular Weight :	44KD

## Product Images



Western Blot analysis of various cells using NEIL1 Polyclonal Antibody