

## NEIL3 Polyclonal Antibody

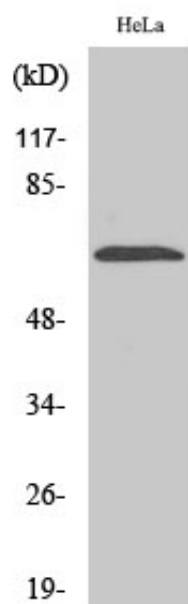
Catalog_no :	AT3031
Applications :	WB,IHC-p,ELISA
Reactivity :	Human,Mouse
Category :	抗原抗体
Size :	100µg/50µg/20µg
Gene_name :	NEIL3
Protein_name :	Endonuclease 8-like 3
Humangene_id :	<a href="#">55247</a>
Humanswissprot_no :	<a href="#">Q8TAT5</a>
Mousegene_id :	<a href="#">234258</a>
Mouseswissprot_no :	<a href="#">Q8K203</a>
Immunogen :	The antiserum was produced against synthesized peptide derived from human NEIL3. AA range:491-540
Specificity :	NEIL3 Polyclonal Antibody detects endogenous levels of NEIL3 protein.
Formulation :	Liquid in PBS containing 50% glycerol, 0.5% BSA and 0.02% sodium azide.
Source :	Rabbit
Dilution :	Western Blot: 1/500 - 1/2000. Immunohistochemistry: 1/100 - 1/300. ELISA: 1/40000. Not yet tested in other applications.
Purification :	The antibody was affinity-purified from rabbit antiserum by affinity-chromatography using epitope-specific immunogen.
Concentration :	1 mg/ml
Storage_stability :	-20°C/1 year
Msds :	MSDS_Antibody.pdf
Other_name :	NEIL3; Endonuclease 8-like 3; DNA glycosylase FPG2; DNA glycosylase/AP lyase Neil3; Endonuclease VIII-like 3; Nei-like protein 3
Molecular	35KD



Weight :

---

## Product Images



Western Blot analysis of various cells using NEIL3 Polyclonal Antibody diluted at 1 : 2000 cells nucleus extracted by Minute TM Cytoplasmic and Nuclear Fractionation kit (SC-003, Invent biotech, MN, USA).