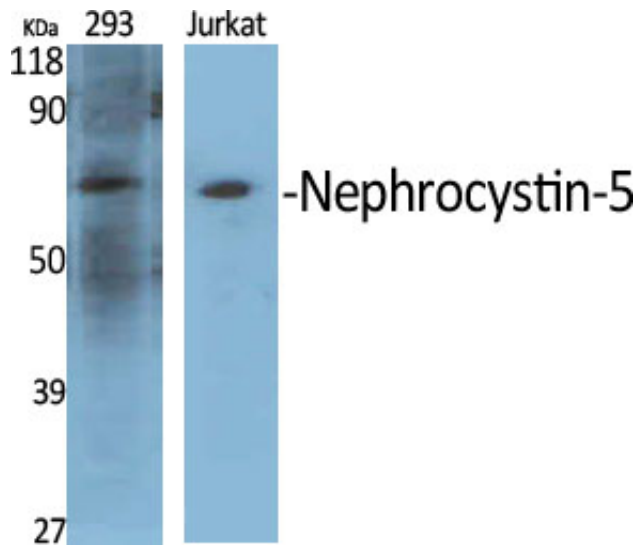


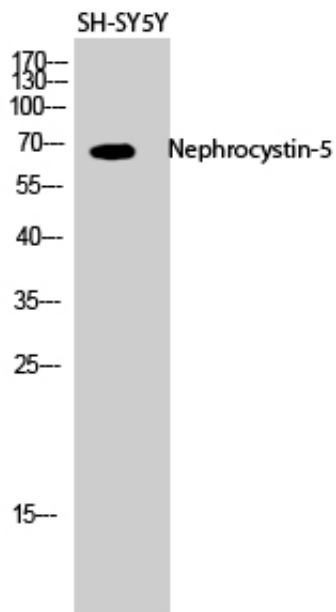
Nephrocystin-5 Polyclonal Antibody

Catalog_no :	AT3038
Applications :	WB,IHC-p,ELISA
Reactivity :	Human
Category :	抗原抗体
Size :	100µg/50µg/20µg
Gene_name :	IQCB1
Protein_name :	IQ calmodulin-binding motif-containing protein 1
Humangene_id :	9657
Humanswissprot_no :	Q15051
Immunogen :	The antiserum was produced against synthesized peptide derived from human IQCB1. AA range:431-480
Specificity :	Nephrocystin-5 Polyclonal Antibody detects endogenous levels of Nephrocystin-5 protein.
Formulation :	Liquid in PBS containing 50% glycerol, 0.5% BSA and 0.02% sodium azide.
Source :	Rabbit
Dilution :	Western Blot: 1/500 - 1/2000. Immunohistochemistry: 1/100 - 1/300. ELISA: 1/40000. Not yet tested in other applications.
Purification :	The antibody was affinity-purified from rabbit antiserum by affinity-chromatography using epitope-specific immunogen.
Concentration :	1 mg/ml
Storage_stability :	-20°C/1 year
Msds :	MSDS_Antibody.pdf
Other_name :	IQCB1; KIAA0036; NPHP5; OK/SW-cl.85; IQ calmodulin-binding motif-containing protein 1; Nephrocystin-5; p53 and DNA damage-regulated IQ motif protein; PIQ
Molecular Weight :	69KD

Product Images



Western Blot analysis of various cells using Nephrocystin-5 Polyclonal Antibody diluted at 1 : 500



Western Blot analysis of SH-SY5Y cells using Nephrocystin-5 Polyclonal Antibody diluted at 1 : 500