

Nesprin-3 Polyclonal Antibody

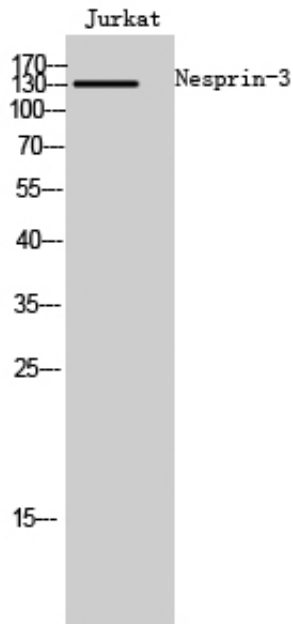
Catalog_no :	AT3039
Applications :	WB,IF,ELISA
Reactivity :	Human,Mouse
Category :	抗原抗体
Size :	100µg/50µg/20µg
Gene_name :	SYNE3
Protein_name :	Nesprin-3
Humangene_id :	161176
Humanswissprot_no :	Q6ZMZ3
Mousegene_id :	212073
Mouseswissprot_no :	Q4FZC9
Immunogen :	The antiserum was produced against synthesized peptide derived from human C14orf49. AA range:169-218
Specificity :	Nesprin-3 Polyclonal Antibody detects endogenous levels of Nesprin-3 protein.
Formulation :	Liquid in PBS containing 50% glycerol, 0.5% BSA and 0.02% sodium azide.
Source :	Rabbit
Dilution :	Western Blot: 1/500 - 1/2000. Immunofluorescence: 1/200 - 1/1000. ELISA: 1/40000. Not yet tested in other applications.
Purification :	The antibody was affinity-purified from rabbit antiserum by affinity-chromatography using epitope-specific immunogen.
Concentration :	1 mg/ml
Storage_stability :	-20°C/1 year
Msds :	MSDS_Antibody.pdf
Other_name :	SYNE3; C14orf49; Nesprin-3; Nuclear envelope spectrin repeat protein 3
Molecular Weight :	130KD



专注二抗产品

Biodragon旗下品牌

Product Images



Western Blot analysis of Jurkat cells using Nesprin-3 Polyclonal Antibody cells nucleus extracted by Minute TM Cytoplasmic and Nuclear Fractionation kit (SC-003, Inventbiotech, MN, USA).