



Netrin-1 Polyclonal Antibody

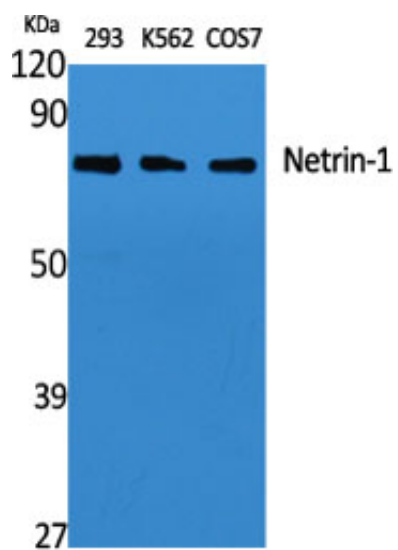
Catalog_no :	<u>AT3042</u>
Applications :	<u>WB,IHC-p,ELISA</u>
Reactivity :	<u>Human,Mouse,Rat,Monkey</u>
Category :	<u>抗原抗体</u>
Size :	<u>100µg/50µg/20µg</u>
Gene_name :	<u>NTN1</u>
Protein_name :	<u>Netrin-1</u>
Humangene_id :	<u>9423</u>
Humanswissprot_no :	<u>O95631</u>
Mousegene_id :	<u>18208</u>
Mouseswissprot_no :	<u>O09118</u>
Ratgene_id :	<u>114523</u>
Ratswissprot_no :	<u>Q92479</u>
Immunogen :	<u>The antiserum was produced against synthesized peptide derived from human Netrin-1. AA range:484-533</u>
Specificity :	<u>Netrin-1 Polyclonal Antibody detects endogenous levels of Netrin-1 protein.</u>
Formulation :	<u>Liquid in PBS containing 50% glycerol, 0.5% BSA and 0.02% sodium azide.</u>
Source :	<u>Rabbit</u>
Dilution :	<u>Western Blot: 1/500 - 1/2000. Immunohistochemistry: 1/100 - 1/300. ELISA: 1/40000. Not yet tested in other applications.</u>
Purification :	<u>The antibody was affinity-purified from rabbit antiserum by affinity-chromatography using epitope-specific immunogen.</u>
Concentration :	<u>1 mg/ml</u>
Storage_stability :	<u>-20°C/1 year</u>
Msds :	<u>MSDS_Antibody.pdf</u>



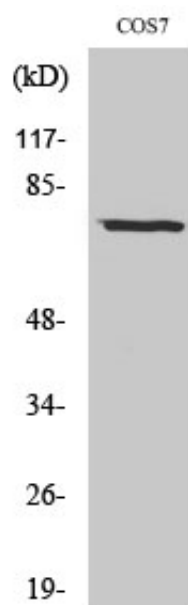
Other_name : NTN1; NTN1L; Netrin-1; Epididymis tissue protein Li 131P

Molecular Weight : 75KD

Product Images



Western Blot analysis of various cells using Netrin-1 Polyclonal Antibody diluted at 1 : 1000



Western Blot analysis of COS7 cells using Netrin-1 Polyclonal Antibody diluted at 1 : 1000