



## Neu Polyclonal Antibody

Catalog_no :	<u>AT3047</u>
Applications :	<u>WB,IHC-p,IF,ELISA</u>
Reactivity :	<u>Human,Mouse,Rat</u>
Category :	<u>抗原抗体</u>
Size :	<u>100µg/50µg/20µg</u>
Gene_name :	<u>ERBB2</u>
Protein_name :	<u>Receptor tyrosine-protein kinase erbB-2</u>
Humangene_id	<u><a href="#">2064</a></u>
:	<u></u>
Humanswissprot	<u><a href="#">P04626</a></u>
_no :	<u></u>
Mousegene_id :	<u><a href="#">13866</a></u>
Mouseswissprot	<u><a href="#">P70424</a></u>
_no :	<u></u>
Ratswissprot_no	<u><a href="#">P06494</a></u>
:	<u></u>
Immunogen :	<u>The antiserum was produced against synthesized peptide derived from human HER2. AA range:641-690</u>
Specificity :	<u>Neu Polyclonal Antibody detects endogenous levels of Neu protein.</u>
Formulation :	<u>Liquid in PBS containing 50% glycerol, 0.5% BSA and 0.02% sodium azide.</u>
Source :	<u>Rabbit</u>
Dilution :	<u>Western Blot: 1/500 - 1/2000. Immunohistochemistry: 1/100 - 1/300. Immunofluorescence: 1/200 - 1/1000. ELISA: 1/20000. Not yet tested in other applications.</u>
Purification :	<u>The antibody was affinity-purified from rabbit antiserum by affinity-chromatography using epitope-specific immunogen.</u>
Concentration :	<u>1 mg/ml</u>
Storage_stability	<u>-20°C/1 year</u>
:	<u></u>
Msds :	<u><a href="#">MSDS_Antibody.pdf</a></u>



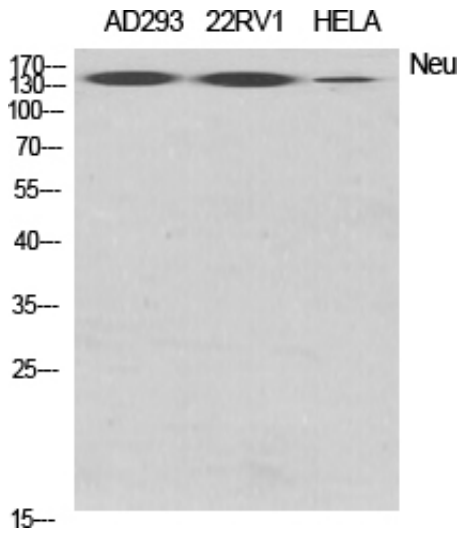
Other\_name : ERBB2; HER2; MLN19; NEU; NGL; Receptor tyrosine-protein kinase erbB-2; Metastatic lymph node gene 19 protein; MLN 19; Proto-oncogene Neu; Proto-oncogene c-ErbB-2; Tyrosine kinase-type cell surface receptor HER2; p185erbB2; CD antigen CD340

---

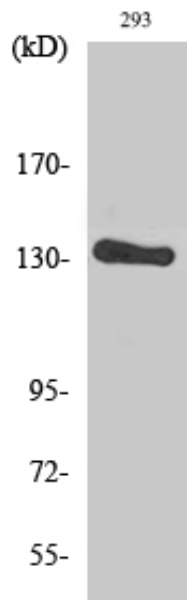
Molecular Weight : 180KD

---

## Product Images



Western Blot analysis of various cells using Neu Polyclonal Antibody diluted at 1 : 2000



Western Blot analysis of 293 cells using Neu Polyclonal Antibody diluted at 1 : 2000