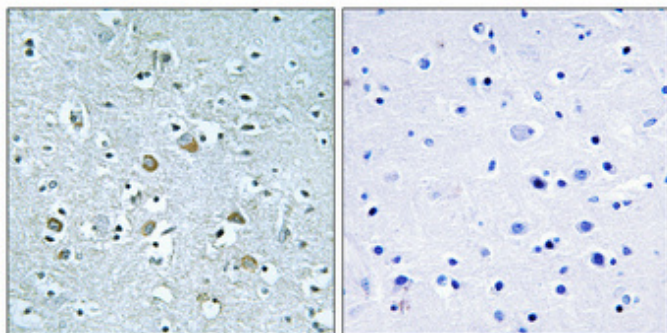


Neuralized-1 Polyclonal Antibody

Catalog_no :	AT3052
Applications :	WB,IHC-p,ELISA
Reactivity :	Human
Category :	抗原抗体
Size :	100µg/50µg/20µg
Gene_name :	NEURL
Protein_name :	Neuralized-like protein 1A
Humangene_id :	9148
Humanswissprot_no :	O76050
Immunogen :	The antiserum was produced against synthesized peptide derived from human NEURL1. AA range:219-268
Specificity :	Neuralized-1 Polyclonal Antibody detects endogenous levels of Neuralized-1 protein.
Formulation :	Liquid in PBS containing 50% glycerol, 0.5% BSA and 0.02% sodium azide.
Source :	Rabbit
Dilution :	Western Blot: 1/500 - 1/2000. Immunohistochemistry: 1/100 - 1/300. ELISA: 1/40000. Not yet tested in other applications.
Purification :	The antibody was affinity-purified from rabbit antiserum by affinity-chromatography using epitope-specific immunogen.
Concentration :	1 mg/ml
Storage_stability :	-20°C/1 year
Msds :	MSDS_Antibody.pdf
Other_name :	NEURL; NEURL1; NEURL1A; RNF67; Neuralized-like protein 1A; h-neu; h-neuralized 1; RING finger protein 67
Molecular Weight :	62KD

Product Images



Immunohistochemical analysis of paraffin-embedded Human brain. Antibody was diluted at 1:100(4°,overnight). High-pressure and temperature Tris-EDTA,pH8.0 was used for antigen retrieval. Negative contrl (right) obtaned from antibody was pre-absorbed by immunogen peptide.