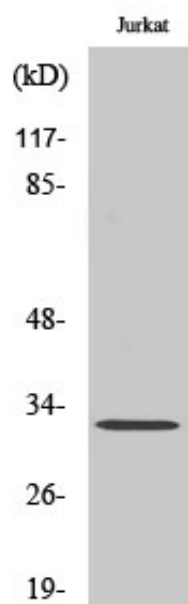




Neutralized-2 Polyclonal Antibody

Catalog_no :	AT3053
Applications :	WB,IHC-p,ELISA
Reactivity :	Human,Mouse
Category :	抗原抗体
Size :	100µg/50µg/20µg
Gene_name :	NEURL2
Protein_name :	Neutralized-like protein 2
Humangene_id :	140825
Humanswissprot_no :	Q9BR09
Mouseswissprot_no :	Q9D0S4
Immunogen :	The antiserum was produced against synthesized peptide derived from human NEURL2. AA range:99-148
Specificity :	Neutralized-2 Polyclonal Antibody detects endogenous levels of Neutralized-2 protein.
Formulation :	Liquid in PBS containing 50% glycerol, 0.5% BSA and 0.02% sodium azide.
Source :	Rabbit
Dilution :	Western Blot: 1/500 - 1/2000. Immunohistochemistry: 1/100 - 1/300. ELISA: 1/40000. Not yet tested in other applications.
Purification :	The antibody was affinity-purified from rabbit antiserum by affinity-chromatography using epitope-specific immunogen.
Concentration :	1 mg/ml
Storage_stability :	-20°C/1 year
Msds :	MSDS_Antibody.pdf
Other_name :	NEURL2; C20orf163; Neutralized-like protein 2
Molecular Weight :	36KD

Product Images



Western Blot analysis of various cells using Neuralized-2 Polyclonal Antibody