

Neurexophilin-3 Polyclonal Antibody

Catalog_no :	AT3059
Applications :	WB,IHC-p,ELISA
Reactivity :	Human,Mouse,Rat
Category :	抗原抗体
Size :	100µg/50µg/20µg
Gene_name :	NXPH3
Protein_name :	Neurexophilin-3
Humangene_id :	11248
Humanswissprot_no :	O95157
Mousegene_id :	104079
Mouseswissprot_no :	Q91VX5
Ratgene_id :	59315
Ratswissprot_no :	Q9Z2N5
Immunogen :	The antiserum was produced against synthesized peptide derived from human NXPH3. AA range:158-207
Specificity :	Neurexophilin-3 Polyclonal Antibody detects endogenous levels of Neurexophilin-3 protein.
Formulation :	Liquid in PBS containing 50% glycerol, 0.5% BSA and 0.02% sodium azide.
Source :	Rabbit
Dilution :	Western Blot: 1/500 - 1/2000. Immunohistochemistry: 1/100 - 1/300. ELISA: 1/10000. Not yet tested in other applications.
Purification :	The antibody was affinity-purified from rabbit antiserum by affinity-chromatography using epitope-specific immunogen.
Concentration :	1 mg/ml
Storage_stability :	-20°C/1 year

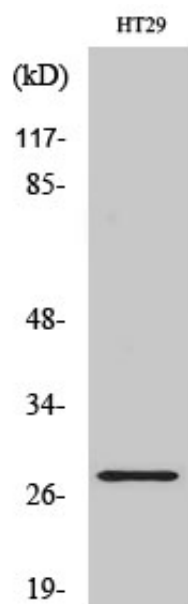


Msd : MSDS_Antibody.pdf

Other_name : NXP3; KIAA1159; NPH3; Neurexophilin-3

Molecular Weight : 30KD

Product Images



Western Blot analysis of various cells using
Neurexophilin-3 Polyclonal Antibody