

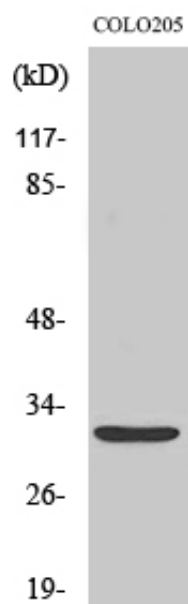
Neurexophilin-4 Polyclonal Antibody

Catalog_no :	AT3060
Applications :	WB,IHC-p,ELISA
Reactivity :	Human,Rat
Category :	抗原抗体
Size :	100µg/50µg/20µg
Gene_name :	NXPH4
Protein_name :	Neurexophilin-4
Humangene_id :	11247
Humanswissprot_no :	O95158
Ratgene_id :	59316
Ratswissprot_no :	Q9Z2N4
Immunogen :	The antiserum was produced against synthesized peptide derived from human NXPH4. AA range:216-265
Specificity :	Neurexophilin-4 Polyclonal Antibody detects endogenous levels of Neurexophilin-4 protein.
Formulation :	Liquid in PBS containing 50% glycerol, 0.5% BSA and 0.02% sodium azide.
Source :	Rabbit
Dilution :	Western Blot: 1/500 - 1/2000. Immunohistochemistry: 1/100 - 1/300. ELISA: 1/40000. Not yet tested in other applications.
Purification :	The antibody was affinity-purified from rabbit antiserum by affinity-chromatography using epitope-specific immunogen.
Concentration :	1 mg/ml
Storage_stability :	-20°C/1 year
Msds :	MSDS_Antibody.pdf
Other_name :	NXPH4; NPH4; Neurexophilin-4
Molecular	33KD



Weight :

Product Images



Western Blot analysis of various cells using
Neurexophilin-4 Polyclonal Antibody