

## Neuro D2 Polyclonal Antibody

Catalog_no :	AT3062
Applications :	WB,IHC-p,ELISA
Reactivity :	Human,Mouse,Rat
Category :	抗原抗体
Size :	100µg/50µg/20µg
Gene_name :	NEUROD2
Protein_name :	Neurogenic differentiation factor 2
Humangene_id	<a href="#">4761</a>
:	
Humanswissprot	<a href="#">Q15784</a>
_no :	
Mousegene_id :	<a href="#">18013</a>
Mouseswissprot	<a href="#">Q62414</a>
_no :	
Ratgene_id :	<a href="#">54276</a>
Ratswissprot_no	<a href="#">Q63689</a>
:	
Immunogen :	The antiserum was produced against synthesized peptide derived from human NDF2. AA range:61-110
Specificity :	Neuro D2 Polyclonal Antibody detects endogenous levels of Neuro D2 protein.
Formulation :	Liquid in PBS containing 50% glycerol, 0.5% BSA and 0.02% sodium azide.
Source :	Rabbit
Dilution :	Western Blot: 1/500 - 1/2000. Immunohistochemistry: 1/100 - 1/300. ELISA: 1/10000. Not yet tested in other applications.
Purification :	The antibody was affinity-purified from rabbit antiserum by affinity-chromatography using epitope-specific immunogen.
Concentration :	1 mg/ml
Storage_stability	-20°C/1 year
:	
Msds :	MSDS_Antibody.pdf



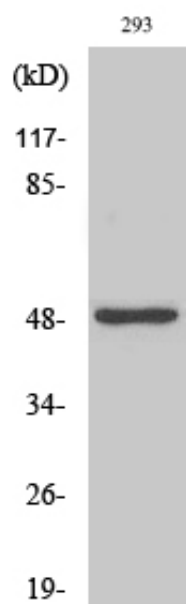
Other\_name : NEUROD2; BHLHA1; NDRF; Neurogenic differentiation factor 2; NeuroD2; Class A basic helix-loop-helix protein 1; bHLHa1; NeuroD-related factor; NDRF

---

Molecular Weight : 48KD

---

## Product Images



Western Blot analysis of various cells using Neuro D2 Polyclonal Antibody cells nucleus extracted by Minute TM Cytoplasmic and Nuclear Fractionation kit (SC-003, Inventbiotech, MN, USA).