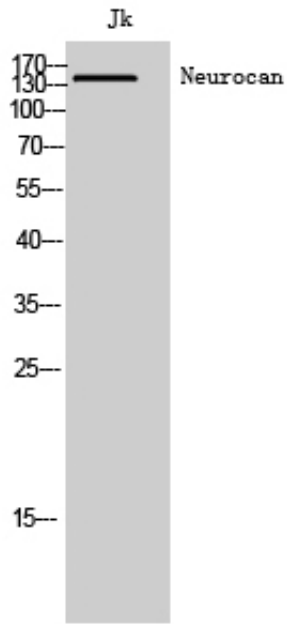




## Neurocan Polyclonal Antibody

|                     |   |
|---------------------|---|
| Catalog_no :        | AT3064  |
| Applications :      | WB,ELISA  |
| Reactivity :        | Human   |
| Category :          | 抗原抗体  |
| Size :              | 100µg/50µg/20µg   |
| Gene_name :         | NCAN  |
| Protein_name :      | Neurocan core protein   |
| Humangene_id :      | <a href="#">1463</a>  |
| Humanswissprot_no : | <a href="#">O14594</a>  |
| Immunogen :         | Synthesized peptide derived from Neurocan . at AA range: 370-450  |
| Specificity :       | Neurocan Polyclonal Antibody detects endogenous levels of Neurocan protein.   |
| Formulation :       | Liquid in PBS containing 50% glycerol, 0.5% BSA and 0.02% sodium azide.   |
| Source :            | Rabbit  |
| Dilution :          | Western Blot: 1/500 - 1/2000. ELISA: 1/40000. Not yet tested in other applications.                                   |
| Purification :      | The antibody was affinity-purified from rabbit antiserum by affinity-chromatography using epitope-specific immunogen. |
| Concentration :     | 1 mg/ml   |
| Storage_stability : | -20°C/1 year  |
| Msds :              | <a href="#">MSDS_Antibody.pdf</a>   |
| Other_name :        | NCAN; CSPG3; NEUR; Neurocan core protein; Chondroitin sulfate proteoglycan 3  |
| Molecular Weight :  | 145KD   |

## Product Images



Western Blot analysis of Jk cells using Neurocan Polyclonal Antibody