

Neurofibromin Polyclonal Antibody

Catalog_no :	AT3065
Applications :	WB,IF,ELISA
Reactivity :	Human,Mouse,Rat
Category :	抗原抗体
Size :	100µg/50µg/20µg
Gene_name :	NF1
Protein_name :	Neurofibromin
Humangene_id :	4763
Humanswissprot_no :	P21359
Mousegene_id :	18015
Mouseswissprot_no :	Q04690
Ratgene_id :	24592
Ratswissprot_no :	P97526
Immunogen :	The antiserum was produced against synthesized peptide derived from human NF1. AA range:1551-1600
Specificity :	Neurofibromin Polyclonal Antibody detects endogenous levels of Neurofibromin protein.
Formulation :	Liquid in PBS containing 50% glycerol, 0.5% BSA and 0.02% sodium azide.
Source :	Rabbit
Dilution :	Western Blot: 1/500 - 1/2000. Immunofluorescence: 1/200 - 1/1000. ELISA: 1/20000. Not yet tested in other applications.
Purification :	The antibody was affinity-purified from rabbit antiserum by affinity-chromatography using epitope-specific immunogen.
Concentration :	1 mg/ml
Storage_stability :	-20°C/1 year

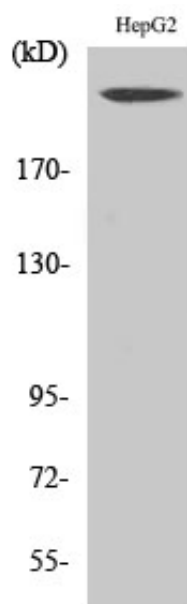


Msd : MSDS_Antibody.pdf

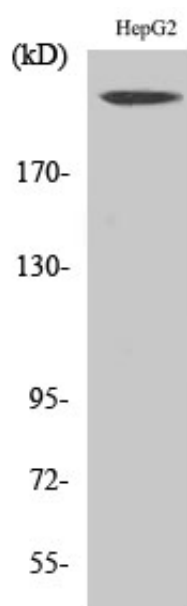
Other_name : NF1; Neurofibromin; Neurofibromatosis-related protein NF-1

Molecular Weight : 319KD

Product Images



Western Blot analysis of various cells using Neurofibromin Polyclonal Antibody



Western Blot analysis of HepG2 cells using Neurofibromin Polyclonal Antibody