

Neuroglycan C Polyclonal Antibody

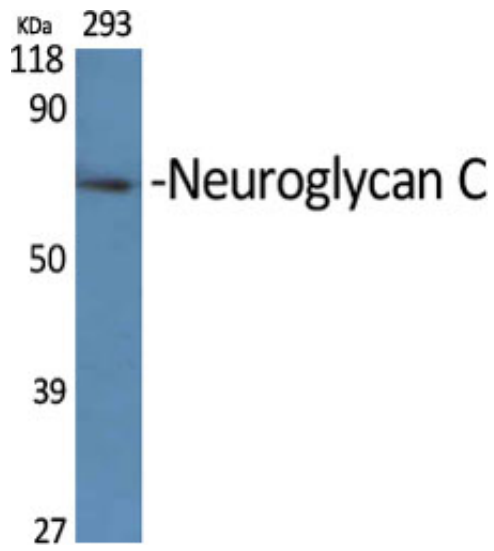
Catalog_no :	AT3066
Applications :	WB,ELISA
Reactivity :	Human,Mouse,Rat
Category :	抗原抗体
Size :	100µg/50µg/20µg
Gene_name :	CSPG5
Protein_name :	Chondroitin sulfate proteoglycan 5
Humangene_id :	10675
Humanswissprot_no :	O95196
Mousegene_id :	29873
Mouseswissprot_no :	Q71M36
Ratgene_id :	50568
Ratswissprot_no :	Q9ERQ6
Immunogen :	The antiserum was produced against synthesized peptide derived from human CSPG5. AA range:211-260
Specificity :	Neuroglycan C Polyclonal Antibody detects endogenous levels of Neuroglycan C protein.
Formulation :	Liquid in PBS containing 50% glycerol, 0.5% BSA and 0.02% sodium azide.
Source :	Rabbit
Dilution :	Western Blot: 1/500 - 1/2000. ELISA: 1/40000. Not yet tested in other applications.
Purification :	The antibody was affinity-purified from rabbit antiserum by affinity-chromatography using epitope-specific immunogen.
Concentration :	1 mg/ml
Storage_stability :	-20°C/1 year
Msds :	MSDS_Antibody.pdf



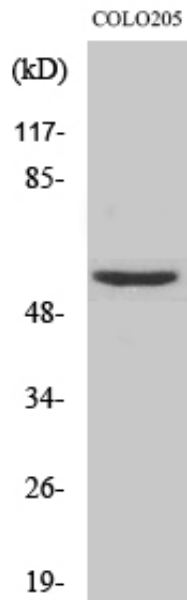
Other_name : CSPG5; CALEB; NGC; Chondroitin sulfate proteoglycan 5; Acidic leucine-rich EGF-like domain-containing brain protein; Neuroglycan C

Molecular Weight : 60KD

Product Images



Western Blot analysis of various cells using Neuroglycan C Polyclonal Antibody



Western Blot analysis of HeLa cells using Neuroglycan C Polyclonal Antibody