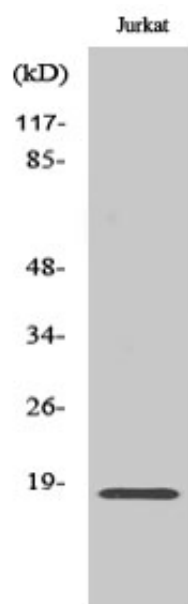




## Neuromedin-S Polyclonal Antibody

Catalog_no :	AT3067
Applications :	WB,IHC-p,ELISA
Reactivity :	Human
Category :	抗原抗体
Size :	100µg/50µg/20µg
Gene_name :	NMS
Protein_name :	Neuromedin-S
Humangene_id :	<a href="#">129521</a>
Humanswissprot_no :	<a href="#">Q5H8A3</a>
Immunogen :	The antiserum was produced against synthesized peptide derived from human NMS. AA range:104-153
Specificity :	Neuromedin-S Polyclonal Antibody detects endogenous levels of Neuromedin-S protein.
Formulation :	Liquid in PBS containing 50% glycerol, 0.5% BSA and 0.02% sodium azide.
Source :	Rabbit
Dilution :	Western Blot: 1/500 - 1/2000. Immunohistochemistry: 1/100 - 1/300. ELISA: 1/40000. Not yet tested in other applications.
Purification :	The antibody was affinity-purified from rabbit antiserum by affinity-chromatography using epitope-specific immunogen.
Concentration :	1 mg/ml
Storage_stability :	-20°C/1 year
Msds :	<a href="#">MSDS_Antibody.pdf</a>
Other_name :	NMS; Neuromedin-S
Molecular Weight :	24KD

## Product Images



Western Blot analysis of various cells using Neuromedin-S Polyclonal Antibody diluted at 1 : 1000