

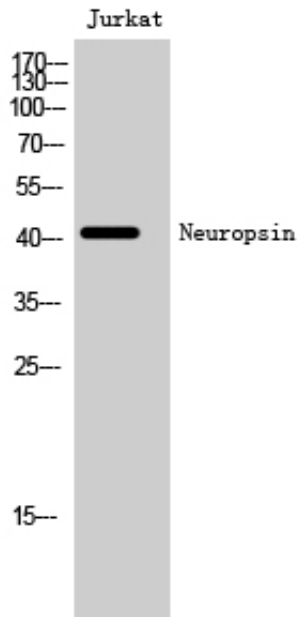
Neuropsin Polyclonal Antibody

Catalog_no :	<u>AT3076</u>
Applications :	<u>WB,IF,ELISA</u>
Reactivity :	<u>Human,Mouse</u>
Category :	<u>抗原抗体</u>
Size :	<u>100µg/50µg/20µg</u>
Gene_name :	<u>OPN5</u>
Protein_name :	<u>Opsin-5</u>
Humangene_id :	<u>221391</u>
Humanswissprot_no :	<u>Q6U736</u>
Mousegene_id :	<u>353344</u>
Mouseswissprot_no :	<u>Q6VZZ7</u>
Immunogen :	<u>The antiserum was produced against synthesized peptide derived from human OPN5. AA range:251-300</u>
Specificity :	<u>Neuropsin Polyclonal Antibody detects endogenous levels of Neuropsin protein.</u>
Formulation :	<u>Liquid in PBS containing 50% glycerol, 0.5% BSA and 0.02% sodium azide.</u>
Source :	<u>Rabbit</u>
Dilution :	<u>Western Blot: 1/500 - 1/2000. Immunofluorescence: 1/200 - 1/1000. ELISA: 1/5000. Not yet tested in other applications.</u>
Purification :	<u>The antibody was affinity-purified from rabbit antiserum by affinity-chromatography using epitope-specific immunogen.</u>
Concentration :	<u>1 mg/ml</u>
Storage_stability :	<u>-20°C/1 year</u>
Msds :	<u>MSDS_Antibody.pdf</u>
Other_name :	<u>OPN5; GPR136; PGR12; TMEM13; Opsin-5; G-protein coupled receptor 136; G-protein coupled receptor PGR12; Neuropsin; Transmembrane protein 13</u>
Molecular	<u>43KD</u>



Weight :

Product Images



Western Blot analysis of Jurkat cells using Neuropsin Polyclonal Antibody