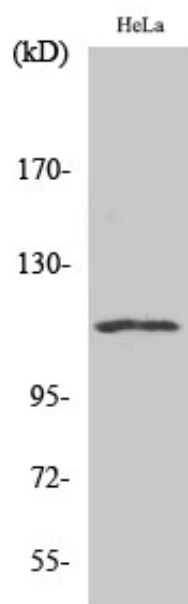




## NFATc3 Polyclonal Antibody

Catalog_no :	AT3083
Applications :	WB,IHC-p,ELISA
Reactivity :	Human,Mouse
Category :	抗原抗体
Size :	100µg/50µg/20µg
Gene_name :	NFATC3
Protein_name :	Nuclear factor of activated T-cells cytoplasmic 3
Humangene_id	<a href="#">4775</a>
:	
Humanswissprot	<a href="#">Q12968</a>
_no :	
Mouseswissprot	<a href="#">P97305</a>
_no :	
Immunogen :	The antiserum was produced against synthesized peptide derived from human NFAT4. AA range:131-180
Specificity :	NFATc3 Polyclonal Antibody detects endogenous levels of NFATc3 protein.
Formulation :	Liquid in PBS containing 50% glycerol, 0.5% BSA and 0.02% sodium azide.
Source :	Rabbit
Dilution :	Western Blot: 1/500 - 1/2000. Immunohistochemistry: 1/100 - 1/300. ELISA: 1/10000. Not yet tested in other applications.
Purification :	The antibody was affinity-purified from rabbit antiserum by affinity-chromatography using epitope-specific immunogen.
Concentration :	1 mg/ml
Storage_stability	-20°C/1 year
:	
Msds :	MSDS_Antibody.pdf
Other_name :	NFATC3; NFAT4; Nuclear factor of activated T-cells; cytoplasmic 3; NF-ATc3; NFATc3; NFATx; T-cell transcription factor NFAT4; NF-AT4
Molecular Weight :	115KD

## Product Images



Western Blot analysis of various cells using NFATc3 Polyclonal Antibody