



NFRκB Polyclonal Antibody

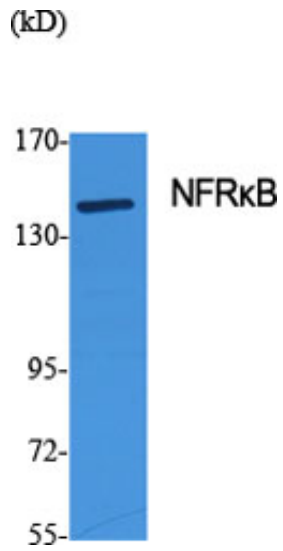
Catalog_no :	AT3089
Applications :	WB,ELISA
Reactivity :	Human,Mouse,Monkey
Category :	抗原抗体
Size :	100μg/50μg/20μg
Gene_name :	NFRKB
Protein_name :	Nuclear factor related to kappa-B-binding protein
Humangene_id :	4798
Humanswissprot_no :	Q6P4R8
Mousegene_id :	235134
Mouseswissprot_no :	Q6PIJ4
Immunogen :	The antiserum was produced against synthesized peptide derived from human NFRKB. AA range:463-512
Specificity :	NFRκB Polyclonal Antibody detects endogenous levels of NFRκB protein.
Formulation :	Liquid in PBS containing 50% glycerol, 0.5% BSA and 0.02% sodium azide.
Source :	Rabbit
Dilution :	Western Blot: 1/500 - 1/2000. ELISA: 1/40000. Not yet tested in other applications.
Purification :	The antibody was affinity-purified from rabbit antiserum by affinity-chromatography using epitope-specific immunogen.
Concentration :	1 mg/ml
Storage_stability :	-20°C/1 year
Msds :	MSDS_Antibody.pdf
Other_name :	NFRKB; INO80G; Nuclear factor related to kappa-B-binding protein; DNA-binding protein R kappa-B; INO80 complex subunit G
Molecular Weight :	110KD



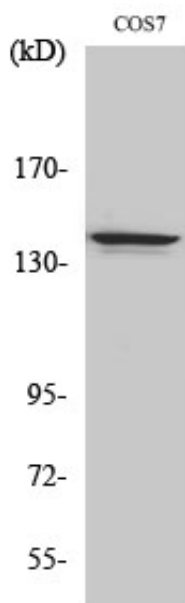
专注二抗产品

Biodragon旗下品牌

Product Images



Western Blot analysis of various cells using NFRκB Polyclonal Antibody diluted at 1 : 500 cells nucleus extracted by Minute TM Cytoplasmic and Nuclear Fractionation kit (SC-003, Inventbiotech, MN, USA).



Western Blot analysis of COS7 cells using NFRκB Polyclonal Antibody diluted at 1 : 500 cells nucleus extracted by Minute TM Cytoplasmic and Nuclear Fractionation kit (SC-003, Inventbiotech, MN, USA).