

NFκB-p100 Polyclonal Antibody

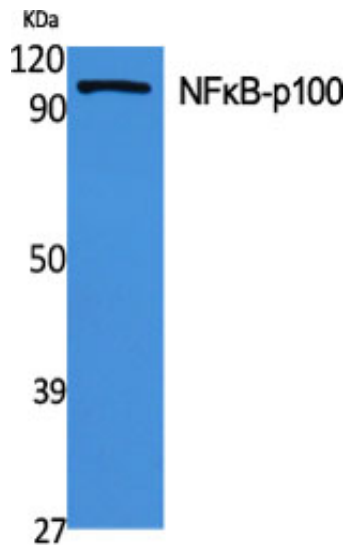
Catalog_no :	AT3093
Applications :	WB,IHC-p,IP,IF,ELISA
Reactivity :	Human,Mouse,Rat
Category :	抗原抗体
Size :	100μg/50μg/20μg
Gene_name :	NFKB2
Protein_name :	Nuclear factor NF-kappa-B p100 subunit
Humangene_id :	4791
Humanswissprot_no :	Q00653
Mousegene_id :	18034
Mouseswissprot_no :	Q9WTK5
Immunogen :	The antiserum was produced against synthesized peptide derived from human NF-kappaB p100/p52. AA range:833-882
Specificity :	NFκB-p100 Polyclonal Antibody detects endogenous levels of NFκB-p100 protein.
Formulation :	Liquid in PBS containing 50% glycerol, 0.5% BSA and 0.02% sodium azide.
Source :	Rabbit
Dilution :	Western Blot: 1/500 - 1/2000. Immunohistochemistry: 1/100 - 1/300. Immunoprecipitation: 2-5 ug/mg lysate. Immunofluorescence: 1/200 - 1/1000. ELISA: 1/20000. Not yet tested in other applications.
Purification :	The antibody was affinity-purified from rabbit antiserum by affinity-chromatography using epitope-specific immunogen.
Concentration :	1 mg/ml
Storage_stability :	-20°C/1 year
Msds :	MSDS_Antibody.pdf
Other_name :	NFKB2; LYT10; Nuclear factor NF-kappa-B p100 subunit; DNA-binding factor KBF2; H2TF1; Lymphocyte translocation chromosome 10 protein; Nuclear factor of kappa light polypeptide gene enhancer in B-cells 2; Oncogene Lyt-10; Lyt10



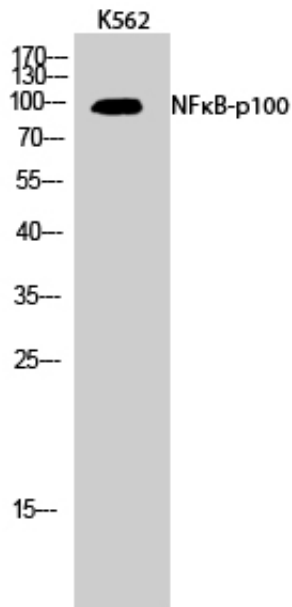
专注二抗产品

Biodragon旗下品牌

Product Images



Western Blot analysis of various cells using NFκB-p100 Polyclonal Antibody diluted at 1 : 1000



Western Blot analysis of K562 cells using NFκB-p100 Polyclonal Antibody diluted at 1 : 1000

Western blot analysis of KB K562 HeLa 293T lysis using NFκB-p100 antibody. Antibody was diluted at 1:1000

