

NFκB-p105 Polyclonal Antibody

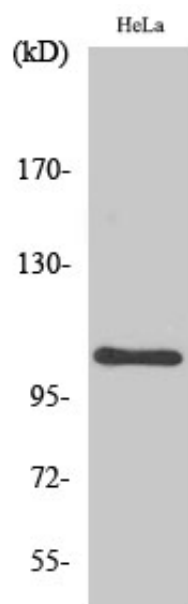
Catalog_no :	AT3098
Applications :	WB,IHC-p,IF,ELISA
Reactivity :	Human,Mouse
Category :	抗原抗体
Size :	100μg/50μg/20μg
Gene_name :	NFKB1
Protein_name :	Nuclear factor NF-kappa-B p105 subunit
Humangene_id :	4790
Humanswissprot_no :	P19838
Mousegene_id :	18033
Mouseswissprot_no :	P25799
Immunogen :	The antiserum was produced against synthesized peptide derived from human NF-kappaB p105/p50. AA range:896-945
Specificity :	NFκB-p105 Polyclonal Antibody detects endogenous levels of NFκB-p105 protein.
Formulation :	Liquid in PBS containing 50% glycerol, 0.5% BSA and 0.02% sodium azide.
Source :	Rabbit
Dilution :	Western Blot: 1/500 - 1/2000. Immunohistochemistry: 1/100 - 1/300. Immunofluorescence: 1/200 - 1/1000. ELISA: 1/40000. Not yet tested in other applications.
Purification :	The antibody was affinity-purified from rabbit antiserum by affinity-chromatography using epitope-specific immunogen.
Concentration :	1 mg/ml
Storage_stability :	-20°C/1 year
Msds :	MSDS_Antibody.pdf
Other_name :	NFKB1; Nuclear factor NF-kappa-B p105 subunit; DNA-binding factor KBF1; EBP-1; Nuclear factor of kappa light polypeptide gene enhancer in B-cells 1



Molecular
Weight :

105KD

Product Images



Western Blot analysis of various cells using NFκB-p105 Polyclonal Antibody