

## NFκB-p65 Polyclonal Antibody

Catalog_no :	AT3104
Applications :	WB,IHC-p,IF,ELISA
Reactivity :	Human,Mouse,Monkey
Category :	抗原抗体
Size :	100μg/50μg/20μg
Gene_name :	RELA
Protein_name :	Transcription factor p65
Humangene_id :	<a href="#">5970</a>
Humanswissprot_no :	<a href="#">Q04206</a>
Mousegene_id :	<a href="#">19697</a>
Mouseswissprot_no :	<a href="#">Q04207</a>
Immunogen :	The antiserum was produced against synthesized peptide derived from human NF-kappaB p65. AA range:275-324
Specificity :	NFκB-p65 Polyclonal Antibody detects endogenous levels of NFκB-p65 protein.
Formulation :	Liquid in PBS containing 50% glycerol, 0.5% BSA and 0.02% sodium azide.
Source :	Rabbit
Dilution :	Western Blot: 1/500 - 1/2000. Immunohistochemistry: 1/100 - 1/300. Immunofluorescence: 1/200 - 1/1000. ELISA: 1/10000. Not yet tested in other applications.
Purification :	The antibody was affinity-purified from rabbit antiserum by affinity-chromatography using epitope-specific immunogen.
Concentration :	1 mg/ml
Storage_stability :	-20°C/1 year
Msds :	<a href="#">MSDS_Antibody.pdf</a>
Other_name :	RELA; NFKB3; Transcription factor p65; Nuclear factor NF-kappa-B p65 subunit; Nuclear factor of kappa light polypeptide gene enhancer in B-cells 3

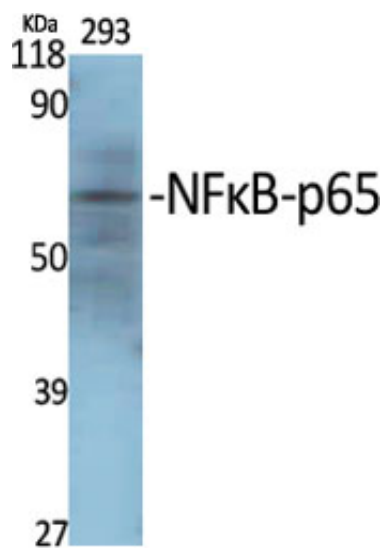


Molecular  
Weight :

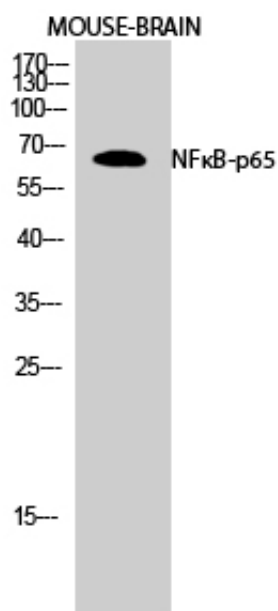
60KD

---

## Product Images



Western Blot analysis of various cells using NFκB-p65 Polyclonal Antibody diluted at 1 : 2000



Western Blot analysis of MOUSE-BRAIN cells using NFκB-p65 Polyclonal Antibody diluted at 1 : 2000