

## NGF Polyclonal Antibody

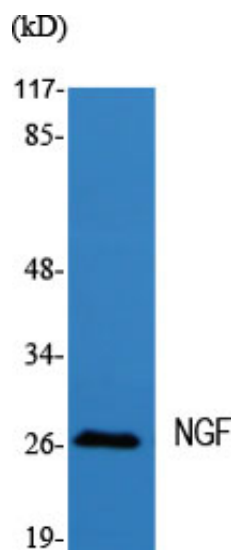
Catalog_no :	<u>AT3114</u>
Applications :	<u>WB,IHC-p,ELISA</u>
Reactivity :	<u>Human,Mouse,Rat</u>
Category :	<u>抗原抗体</u>
Size :	<u>100µg/50µg/20µg</u>
Gene_name :	<u>NGF</u>
Protein_name :	<u>Beta-nerve growth factor</u>
Humangene_id	<u><a href="#">4803</a></u>
:	<u></u>
Humanswissprot	<u><a href="#">P01138</a></u>
_no :	<u></u>
Mousegene_id :	<u><a href="#">18049</a></u>
Mouseswissprot	<u><a href="#">P01139</a></u>
_no :	<u></u>
Ratgene_id :	<u><a href="#">310738</a></u>
Ratswissprot_no	<u><a href="#">P25427</a></u>
:	<u></u>
Immunogen :	<u>The antiserum was produced against synthesized peptide derived from human NGF. AA range:33-82</u>
Specificity :	<u>NGF Polyclonal Antibody detects endogenous levels of NGF protein.</u>
Formulation :	<u>Liquid in PBS containing 50% glycerol, 0.5% BSA and 0.02% sodium azide.</u>
Source :	<u>Rabbit</u>
Dilution :	<u>Western Blot: 1/500 - 1/2000. Immunohistochemistry: 1/100 - 1/300. ELISA: 1/40000. Not yet tested in other applications.</u>
Purification :	<u>The antibody was affinity-purified from rabbit antiserum by affinity-chromatography using epitope-specific immunogen.</u>
Concentration :	<u>1 mg/ml</u>
Storage_stability	<u>-20°C/1 year</u>
:	<u></u>
Msds :	<u>MSDS_Antibody.pdf</u>



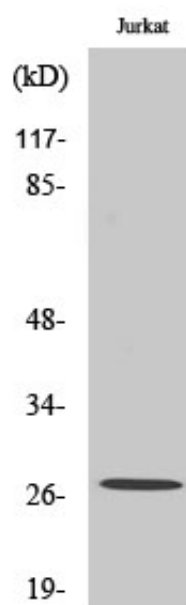
Other\_name : NGF; NGFB; Beta-nerve growth factor; Beta-NGF

Molecular Weight : 27KD

## Product Images



Western Blot analysis of various cells using NGF Polyclonal Antibody diluted at 1 : 2000



Western Blot analysis of Jurkat cells using NGF Polyclonal Antibody diluted at 1 : 2000