

NGFR p75 Polyclonal Antibody

Catalog_no :	AT3116
Applications :	WB,IF,ELISA
Reactivity :	Human,Mouse,Rat
Category :	抗原抗体
Size :	100µg/50µg/20µg
Gene_name :	NGFR
Protein_name :	Tumor necrosis factor receptor superfamily member 16
Humangene_id	4804
:	
Humanswissprot	P08138
_no :	
Mouseswissprot	Q9Z0W1
_no :	
Ratgene_id :	24596
Ratswissprot_no	P07174
:	
Immunogen :	The antiserum was produced against synthesized peptide derived from human TNFR16. AA range:121-170
Specificity :	NGFR p75 Polyclonal Antibody detects endogenous levels of NGFR p75 protein.
Formulation :	Liquid in PBS containing 50% glycerol, 0.5% BSA and 0.02% sodium azide.
Source :	Rabbit
Dilution :	Western Blot: 1/500 - 1/2000. Immunofluorescence: 1/200 - 1/1000. ELISA: 1/40000. Not yet tested in other applications.
Purification :	The antibody was affinity-purified from rabbit antiserum by affinity-chromatography using epitope-specific immunogen.
Concentration :	1 mg/ml
Storage_stability	-20°C/1 year
:	
Msds :	MSDS_Antibody.pdf
Other_name :	NGFR; TNFRSF16; Tumor necrosis factor receptor superfamily member 16; Gp80-LNGFR;

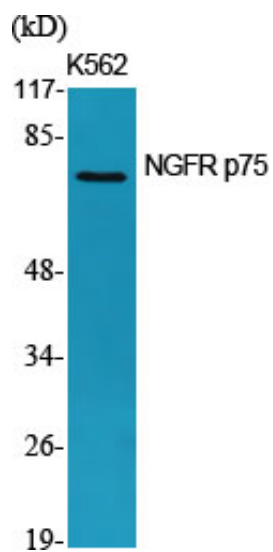


Low affinity neurotrophin receptor p75NTR; Low-affinity nerve growth factor receptor; NGF receptor; p75 ICD; CD antigen CD271

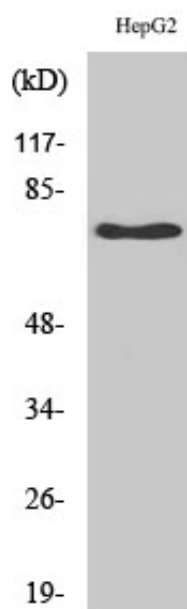
Molecular
Weight :

75KD

Product Images



Western Blot analysis of various cells using NGFR p75 Polyclonal Antibody



Western Blot analysis of HepG2 cells using NGFR p75 Polyclonal Antibody