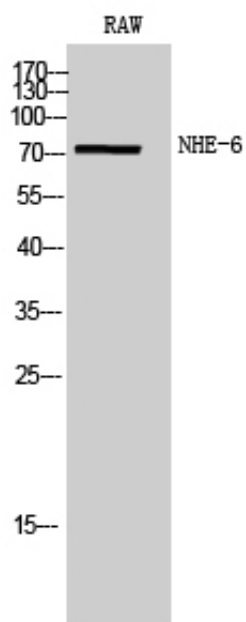




## NHE-6 Polyclonal Antibody

Catalog_no :	AT3117
Applications :	WB,ELISA
Reactivity :	Human,Mouse
Category :	抗原抗体
Size :	100µg/50µg/20µg
Gene_name :	SLC9A6
Protein_name :	Sodium/hydrogen exchanger 6
Humangene_id :	<a href="#">10479</a>
Humanswissprot_no :	<a href="#">Q92581</a>
Immunogen :	The antiserum was produced against synthesized peptide derived from human SLC9A6. AA range:551-600
Specificity :	NHE-6 Polyclonal Antibody detects endogenous levels of NHE-6 protein.
Formulation :	Liquid in PBS containing 50% glycerol, 0.5% BSA and 0.02% sodium azide.
Source :	Rabbit
Dilution :	Western Blot: 1/500 - 1/2000. ELISA: 1/40000. Not yet tested in other applications.
Purification :	The antibody was affinity-purified from rabbit antiserum by affinity-chromatography using epitope-specific immunogen.
Concentration :	1 mg/ml
Storage_stability :	-20°C/1 year
Msds :	MSDS_Antibody.pdf
Other_name :	SLC9A6; KIAA0267; NHE6; Sodium/hydrogen exchanger 6; Na(+)/H(+) exchanger 6; NHE-6; Solute carrier family 9 member 6
Molecular Weight :	75KD

## Product Images



Western Blot analysis of RAW cells using NHE-6 Polyclonal Antibody