

NHE-8 Polyclonal Antibody

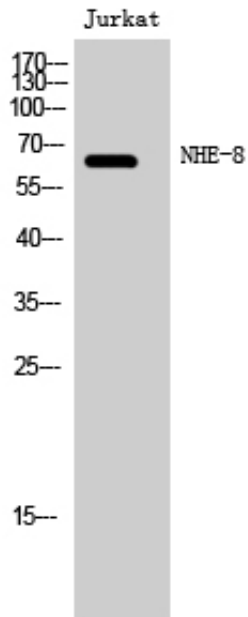
Catalog_no :	<u>AT3119</u>
Applications :	<u>WB,IHC-p,ELISA</u>
Reactivity :	<u>Human,Mouse,Rat</u>
Category :	<u>抗原抗体</u>
Size :	<u>100µg/50µg/20µg</u>
Gene_name :	<u>SLC9A8</u>
Protein_name :	<u>Sodium/hydrogen exchanger 8</u>
Humangene_id :	<u>23315</u>
Humanswissprot_no :	<u>Q9Y2E8</u>
Mousegene_id :	<u>77031</u>
Mouseswissprot_no :	<u>Q8R4D1</u>
Ratgene_id :	<u>311651</u>
Ratswissprot_no :	<u>Q4L208</u>
Immunogen :	<u>The antiserum was produced against synthesized peptide derived from human SLC9A8. AA range:451-500</u>
Specificity :	<u>NHE-8 Polyclonal Antibody detects endogenous levels of NHE-8 protein.</u>
Formulation :	<u>Liquid in PBS containing 50% glycerol, 0.5% BSA and 0.02% sodium azide.</u>
Source :	<u>Rabbit</u>
Dilution :	<u>Western Blot: 1/500 - 1/2000.IHC-p:1:50-300 ELISA: 1/20000. Not yet tested in other applications.</u>
Purification :	<u>The antibody was affinity-purified from rabbit antiserum by affinity-chromatography using epitope-specific immunogen.</u>
Concentration :	<u>1 mg/ml</u>
Storage_stability :	<u>-20°C/1 year</u>
Msds :	<u>MSDS_Antibody.pdf</u>



Other_name : SLC9A8; KIAA0939; NHE8; Sodium/hydrogen exchanger 8; Na(+)/H(+) exchanger 8; NHE-8; Solute carrier family 9 member 8

Molecular Weight : 65KD

Product Images



Western Blot analysis of Jurkat cells using NHE-8 Polyclonal Antibody