



NHE-9 Polyclonal Antibody

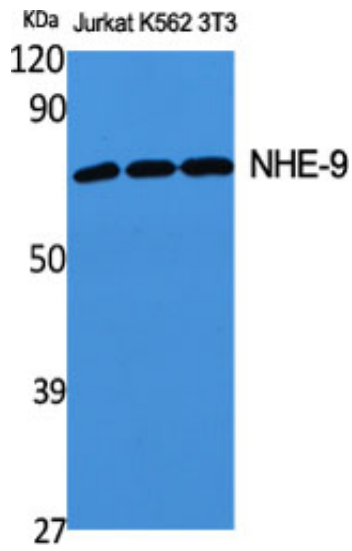
Catalog_no :	AT3120
Applications :	WB,ELISA
Reactivity :	Human,Mouse
Category :	抗原抗体
Size :	100µg/50µg/20µg
Gene_name :	SLC9A9
Protein_name :	Sodium/hydrogen exchanger 9
Humangene_id :	285195
Humanswissprot_no :	Q8IVB4
Mousegene_id :	331004
Mouseswissprot_no :	Q8BZ00
Immunogen :	The antiserum was produced against synthesized peptide derived from human SLC9A9. AA range:171-220
Specificity :	NHE-9 Polyclonal Antibody detects endogenous levels of NHE-9 protein.
Formulation :	Liquid in PBS containing 50% glycerol, 0.5% BSA and 0.02% sodium azide.
Source :	Rabbit
Dilution :	Western Blot: 1/500 - 1/2000. ELISA: 1/40000. Not yet tested in other applications.
Purification :	The antibody was affinity-purified from rabbit antiserum by affinity-chromatography using epitope-specific immunogen.
Concentration :	1 mg/ml
Storage_stability :	-20°C/1 year
Msds :	MSDS_Antibody.pdf
Other_name :	SLC9A9; NHE9; Nbla00118; Sodium/hydrogen exchanger 9; Na(+)/H(+) exchanger 9; NHE-9; Solute carrier family 9 member 9
Molecular Weight :	65KD



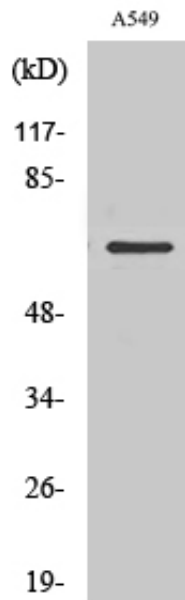
专注二抗产品

Biodragon旗下品牌

Product Images



Western Blot analysis of various cells using NHE-9 Polyclonal Antibody



Western Blot analysis of RAW264.7 cells using NHE-9 Polyclonal Antibody