

## Nicalin Polyclonal Antibody

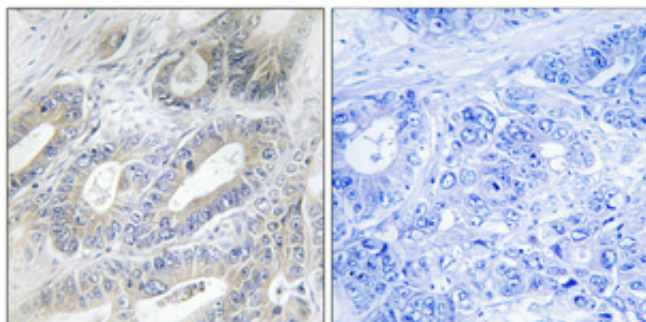
Catalog_no :	AT3124
Applications :	WB,IHC-p,ELISA
Reactivity :	Human,Mouse,Rat
Category :	抗原抗体
Size :	100µg/50µg/20µg
Gene_name :	NCLN
Protein_name :	Nicalin
Humangene_id :	<a href="#">56926</a>
Humanswissprot_no :	<a href="#">Q969V3</a>
Mousegene_id :	<a href="#">103425</a>
Mouseswissprot_no :	<a href="#">Q8VCM8</a>
Ratgene_id :	<a href="#">314648</a>
Ratswissprot_no :	<a href="#">Q5XIA1</a>
Immunogen :	The antiserum was produced against synthesized peptide derived from human NCLN. AA range:474-523
Specificity :	Nicalin Polyclonal Antibody detects endogenous levels of Nicalin protein.
Formulation :	Liquid in PBS containing 50% glycerol, 0.5% BSA and 0.02% sodium azide.
Source :	Rabbit
Dilution :	Western Blot: 1/500 - 1/2000. Immunohistochemistry: 1/100 - 1/300. ELISA: 1/40000. Not yet tested in other applications.
Purification :	The antibody was affinity-purified from rabbit antiserum by affinity-chromatography using epitope-specific immunogen.
Concentration :	1 mg/ml
Storage_stability :	-20°C/1 year
Msds :	MSDS_Antibody.pdf



Other\_name : NCLN; Nicalin; Nicastrin-like protein

Molecular Weight : 63KD

## Product Images



Immunohistochemical analysis of paraffin-embedded Human colon cancer. Antibody was diluted at 1:100(4°,overnight). High-pressure and temperature Tris-EDTA,pH8.0 was used for antigen retrieval. Negative contrl (right) obtaned from antibody was pre-absorbed by immunogen peptide.