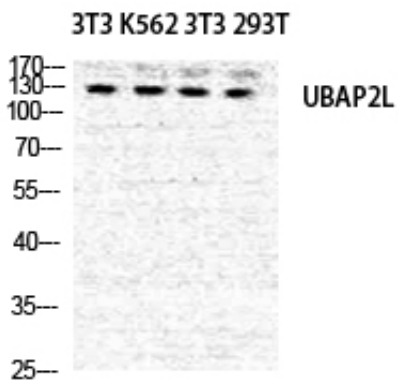




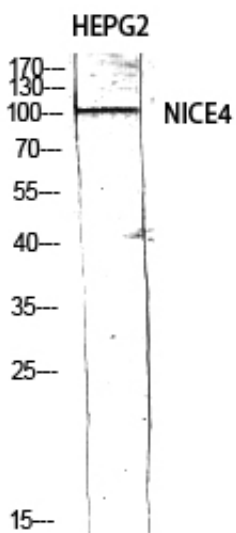
NICE4 Polyclonal Antibody

Catalog_no :	<u>AT3125</u>
Applications :	<u>WB,ELISA</u>
Reactivity :	<u>Human,Mouse</u>
Category :	<u>抗原抗体</u>
Size :	<u>100µg/50µg/20µg</u>
Gene_name :	<u>UBAP2L</u>
Protein_name :	<u>Ubiquitin-associated protein 2-like</u>
Humangene_id	<u>9898</u>
:	<u></u>
Humanswissprot	<u>Q14157</u>
_no :	<u></u>
Mousegene_id :	<u>74383</u>
Mouseswissprot	<u>Q80X50</u>
_no :	<u></u>
Immunogen :	<u>The antiserum was produced against synthesized peptide derived from human UBAP2L. AA range:561-610</u>
Specificity :	<u>NICE4 Polyclonal Antibody detects endogenous levels of NICE4 protein.</u>
Formulation :	<u>Liquid in PBS containing 50% glycerol, 0.5% BSA and 0.02% sodium azide.</u>
Source :	<u>Rabbit</u>
Dilution :	<u>Western Blot: 1/500 - 1/2000. ELISA: 1/20000. Not yet tested in other applications.</u>
Purification :	<u>The antibody was affinity-purified from rabbit antiserum by affinity-chromatography using epitope-specific immunogen.</u>
Concentration :	<u>1 mg/ml</u>
Storage_stability	<u>-20°C/1 year</u>
:	<u></u>
Msds :	<u>MSDS_Antibody.pdf</u>
Other_name :	<u>UBAP2L; KIAA0144; NICE4; Ubiquitin-associated protein 2-like; Protein NICE-4</u>
Molecular Weight :	<u>115KD</u>

Product Images



Western Blot analysis of NIH-3T3 K562 NIH-3T3 293T cells using NICE4 Polyclonal Antibody diluted at 1 : 500



Western Blot analysis of HEPG2 using NICE4 Polyclonal Antibody diluted at 1 : 500