



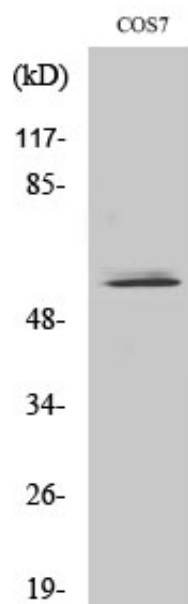
NIPA Polyclonal Antibody

Catalog_no :	<u>AT3129</u>
Applications :	<u>WB,IF,ELISA</u>
Reactivity :	<u>Human,Mouse,Rat,Monkey</u>
Category :	<u>抗原抗体</u>
Size :	<u>100µg/50µg/20µg</u>
Gene_name :	<u>ZC3HC1</u>
Protein_name :	<u>Nuclear-interacting partner of ALK</u>
Humangene_id :	<u>51530</u>
Humanswissprot_no :	<u>Q86WB0</u>
Mousegene_id :	<u>232679</u>
Mouseswissprot_no :	<u>Q80YV2</u>
Immunogen :	<u>The antiserum was produced against synthesized peptide derived from human NIPA. AA range:320-369</u>
Specificity :	<u>NIPA Polyclonal Antibody detects endogenous levels of NIPA protein.</u>
Formulation :	<u>Liquid in PBS containing 50% glycerol, 0.5% BSA and 0.02% sodium azide.</u>
Source :	<u>Rabbit</u>
Dilution :	<u>Western Blot: 1/500 - 1/2000. Immunofluorescence: 1/200 - 1/1000. ELISA: 1/40000. Not yet tested in other applications.</u>
Purification :	<u>The antibody was affinity-purified from rabbit antiserum by affinity-chromatography using epitope-specific immunogen.</u>
Concentration :	<u>1 mg/ml</u>
Storage_stability :	<u>-20°C/1 year</u>
Msds :	<u>MSDS_Antibody.pdf</u>
Other_name :	<u>ZC3HC1; NIPA; HSPC216; Nuclear-interacting partner of ALK; Nuclear-interacting partner of anaplastic lymphoma kinase; hNIPA; Zinc finger C3HC-type protein 1</u>
Molecular	<u>55KD</u>



Weight :

Product Images



Western Blot analysis of various cells using NIPA Polyclonal Antibody diluted at 1 : 2000 cells nucleus extracted by Minute TM Cytoplasmic and Nuclear Fractionation kit (SC-003, Invent biotech, MN, USA).