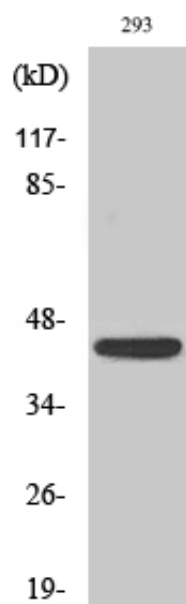


NKp46 Polyclonal Antibody

Catalog_no :	AT3136
Applications :	WB,ELISA
Reactivity :	Human
Category :	抗原抗体
Size :	100µg/50µg/20µg
Gene_name :	NCR1
Protein_name :	Natural cytotoxicity triggering receptor 1
Humangene_id :	9437
Humanswissprot_no :	O76036
Immunogen :	The antiserum was produced against synthesized peptide derived from human NCR1. AA range:145-194
Specificity :	NKp46 Polyclonal Antibody detects endogenous levels of NKp46 protein.
Formulation :	Liquid in PBS containing 50% glycerol, 0.5% BSA and 0.02% sodium azide.
Source :	Rabbit
Dilution :	Western Blot: 1/500 - 1/2000. ELISA: 1/10000. Not yet tested in other applications.
Purification :	The antibody was affinity-purified from rabbit antiserum by affinity-chromatography using epitope-specific immunogen.
Concentration :	1 mg/ml
Storage_stability :	-20°C/1 year
Msds :	MSDS_Antibody.pdf
Other_name :	NCR1; LY94; Natural cytotoxicity triggering receptor 1; Lymphocyte antigen 94 homolog; NK cell-activating receptor; Natural killer cell p46-related protein; NK-p46; NKp46; hNKp46; CD antigen CD335
Molecular Weight :	40KD

Product Images



Western Blot analysis of various cells using NKp46 Polyclonal Antibody cells nucleus extracted by Minute TM Cytoplasmic and Nuclear Fractionation kit (SC-003, Inventbiotech, MN, USA).