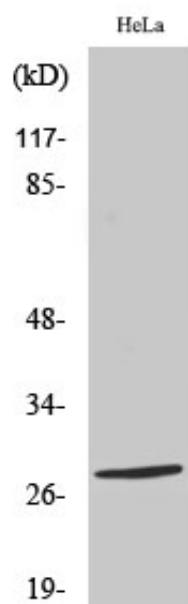




Nkx-2.6 Polyclonal Antibody

Catalog_no :	AT3140
Applications :	WB,ELISA
Reactivity :	Human
Category :	抗原抗体
Size :	100µg/50µg/20µg
Gene_name :	NKX2-6
Protein_name :	Homeobox protein Nkx-2.6
Humangene_id :	18092
Humanswissprot_no :	A6NCS4
Immunogen :	The antiserum was produced against synthesized peptide derived from human NKX26. AA range:91-140
Specificity :	Nkx-2.6 Polyclonal Antibody detects endogenous levels of Nkx-2.6 protein.
Formulation :	Liquid in PBS containing 50% glycerol, 0.5% BSA and 0.02% sodium azide.
Source :	Rabbit
Dilution :	Western Blot: 1/500 - 1/2000. ELISA: 1/40000. Not yet tested in other applications.
Purification :	The antibody was affinity-purified from rabbit antiserum by affinity-chromatography using epitope-specific immunogen.
Concentration :	1 mg/ml
Storage_stability :	-20°C/1 year
Msds :	MSDS_Antibody.pdf
Other_name :	NKX2-6; NKX2F; Homeobox protein Nkx-2.6; Homeobox protein NK-2 homolog F
Molecular Weight :	28KD

Product Images



Western Blot analysis of various cells using Nkx-2.6 Polyclonal Antibody diluted at 1 : 500