

NMBR Polyclonal Antibody

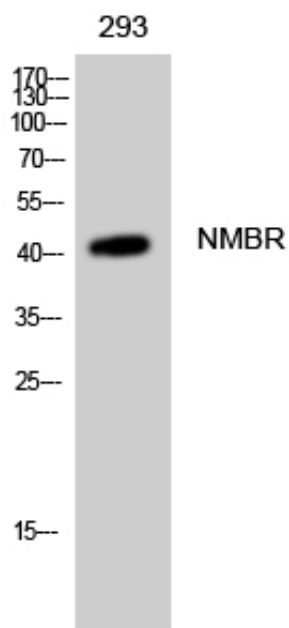
Catalog_no :	AT3148
Applications :	WB,IF,ELISA
Reactivity :	Human,Mouse,Rat
Category :	抗原抗体
Size :	100µg/50µg/20µg
Gene_name :	NMBR
Protein_name :	Neuromedin-B receptor
Humangene_id	4829
:	
Humanswissprot	P28336
_no :	
Mousegene_id :	18101
Mouseswissprot	O54799
_no :	
Ratgene_id :	25264
Ratswissprot_no	P24053
:	
Immunogen :	The antiserum was produced against synthesized peptide derived from human NMBR. AA range:221-270
Specificity :	NMBR Polyclonal Antibody detects endogenous levels of NMBR protein.
Formulation :	Liquid in PBS containing 50% glycerol, 0.5% BSA and 0.02% sodium azide.
Source :	Rabbit
Dilution :	Western Blot: 1/500 - 1/2000. Immunofluorescence: 1/200 - 1/1000. ELISA: 1/5000. Not yet tested in other applications.
Purification :	The antibody was affinity-purified from rabbit antiserum by affinity-chromatography using epitope-specific immunogen.
Concentration :	1 mg/ml
Storage_stability	-20°C/1 year
:	
Msds :	MSDS_Antibody.pdf



Other_name : NMBR; Neuromedin-B receptor; NMB-R; Epididymis tissue protein Li 185a; Neuromedin-B-preferring bombesin receptor

Molecular Weight : 43KD

Product Images



Western Blot analysis of 293 cells using NMBR Polyclonal Antibody