



NMDAε4 Polyclonal Antibody

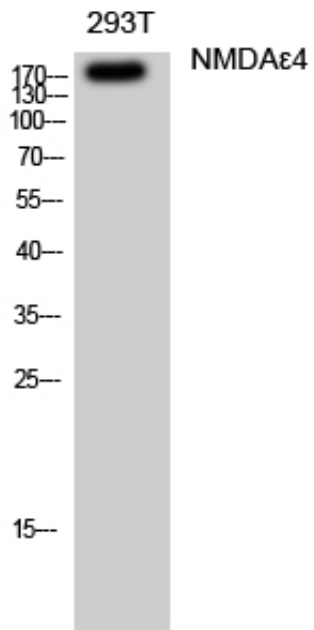
Catalog_no :	<u>AT3155</u>
Applications :	<u>WB,ELISA</u>
Reactivity :	<u>Human,Mouse,Rat,Monkey</u>
Category :	<u>抗原抗体</u>
Size :	<u>100μg/50μg/20μg</u>
Gene_name :	<u>GRIN2D</u>
Protein_name :	<u>Glutamate [NMDA] receptor subunit epsilon-4</u>
Humangene_id :	<u>2906</u>
Humanswissprot_no :	<u>O15399</u>
Mousegene_id :	<u>14814</u>
Mouseswissprot_no :	<u>Q03391</u>
Ratgene_id :	<u>24412</u>
Ratswissprot_no :	<u>Q62645</u>
Immunogen :	<u>The antiserum was produced against synthesized peptide derived from human GRIN2D. AA range:671-720</u>
Specificity :	<u>NMDAε4 Polyclonal Antibody detects endogenous levels of NMDAε4 protein.</u>
Formulation :	<u>Liquid in PBS containing 50% glycerol, 0.5% BSA and 0.02% sodium azide.</u>
Source :	<u>Rabbit</u>
Dilution :	<u>Western Blot: 1/500 - 1/2000. ELISA: 1/40000. Not yet tested in other applications.</u>
Purification :	<u>The antibody was affinity-purified from rabbit antiserum by affinity-chromatography using epitope-specific immunogen.</u>
Concentration :	<u>1 mg/ml</u>
Storage_stability :	<u>-20°C/1 year</u>
Msds :	<u>MSDS_Antibody.pdf</u>



Other_name : GRIN2D; GluN2D; NMDAR2D; Glutamate [NMDA] receptor subunit epsilon-4; EB11; N-methyl D-aspartate receptor subtype 2D; NMDAR2D; NR2D

Molecular Weight : 170KD

Product Images



Western Blot analysis of 293T cells using NMDAε4 Polyclonal Antibody diluted at 1 : 500