

Nogo A Polyclonal Antibody

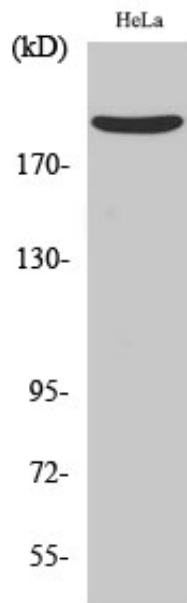
Catalog_no :	AT3162
Applications :	WB,IHC-p,ELISA
Reactivity :	Human,Mouse,Rat
Category :	抗原抗体
Size :	100µg/50µg/20µg
Gene_name :	RTN4
Protein_name :	Reticulon-4
Humangene_id :	57142
Humanswissprot_no :	Q9NQ3
Mousegene_id :	68585
Mouseswissprot_no :	Q99P72
Ratgene_id :	83765
Ratswissprot_no :	Q9JK11
Immunogen :	The antiserum was produced against synthesized peptide derived from human Nogo A. AA range:450-499
Specificity :	Nogo A Polyclonal Antibody detects endogenous levels of Nogo A protein.
Formulation :	Liquid in PBS containing 50% glycerol, 0.5% BSA and 0.02% sodium azide.
Source :	Rabbit
Dilution :	Western Blot: 1/500 - 1/2000. Immunohistochemistry: 1/100 - 1/300. ELISA: 1/10000. Not yet tested in other applications.
Purification :	The antibody was affinity-purified from rabbit antiserum by affinity-chromatography using epitope-specific immunogen.
Concentration :	1 mg/ml
Storage_stability :	-20°C/1 year
Msds :	MSDS_Antibody.pdf



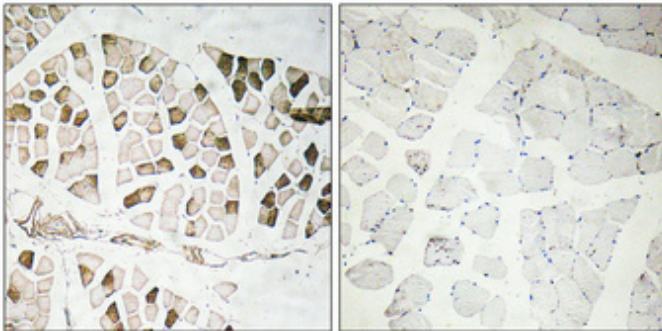
Other_name : RTN4; KIAA0886; NOGO; My043; SP1507; Reticulon-4; Foccen; Neurite outgrowth inhibitor; Nogo protein; Neuroendocrine-specific protein; NSP; Neuroendocrine-specific protein C homolog; RTN-x; Reticulon-5

Molecular Weight : 220KD

Product Images



Western Blot analysis of various cells using Nogo A Polyclonal Antibody



Immunohistochemical analysis of paraffin-embedded Human skeletal muscle. Antibody was diluted at 1:100(4°, overnight). High-pressure and temperature Tris-EDTA, pH8.0 was used for antigen retrieval. Negative control (right) obtained from antibody was pre-absorbed by immunogen peptide.