

## NOS2 Polyclonal Antibody

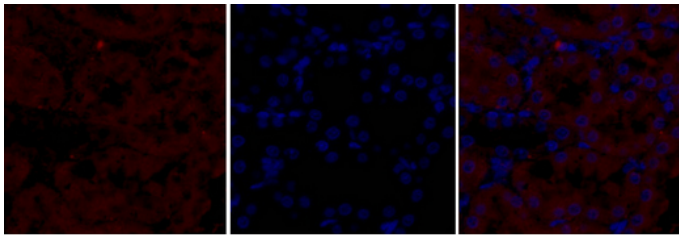
Catalog_no :	AT3169
Applications :	IF,WB,IHC-p,ELISA
Reactivity :	Human,Mouse,Rat
Category :	抗原抗体
Size :	100µg/50µg/20µg
Gene_name :	NOS2
Protein_name :	Nitric oxide synthase inducible
Humangene_id	<a href="#">4843</a>
:	
Humanswissprot	<a href="#">P35228</a>
_no :	
Mousegene_id :	<a href="#">18126</a>
Mouseswissprot	<a href="#">P29477</a>
_no :	
Ratgene_id :	<a href="#">24599</a>
Ratswissprot_no	<a href="#">Q06518</a>
:	
Immunogen :	The antiserum was produced against synthesized peptide derived from human iNOS. AA range:117-166
Specificity :	NOS2 Polyclonal Antibody detects endogenous levels of NOS2 protein.
Formulation :	Liquid in PBS containing 50% glycerol, 0.5% BSA and 0.02% sodium azide.
Source :	Rabbit
Dilution :	IF: 1:50-200 WB 1:500-2000, ELISA 1:10000-20000 IHC 1:50-300
Purification :	The antibody was affinity-purified from rabbit antiserum by affinity-chromatography using epitope-specific immunogen.
Concentration :	1 mg/ml
Storage_stability	-20°C/1 year
:	
Msds :	<a href="#">MSDS_Antibody.pdf</a>



Other\_name : NOS2; NOS2A; Nitric oxide synthase; inducible; Hepatocyte NOS; HEP-NOS; Inducible NO synthase; Inducible NOS; iNOS; NOS type II; Peptidyl-cysteine S-nitrosylase NOS2

Molecular Weight : 131KD

## Product Images

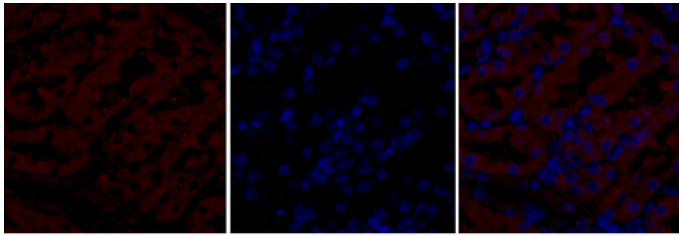


Immunofluorescence analysis of rat-kidney tissue. 1, NOS2 Polyclonal Antibody (red) was diluted at 1:200 (4°C, overnight). 2, Cy3 labeled Secondary antibody was diluted at 1:300 (room temperature, 50min). 3, Picture B: DAPI (blue) 10min. Picture A: Target. Picture B: DAPI. Picture C: merge of A+B

A

B

C

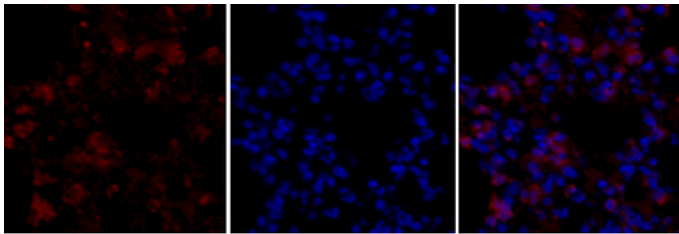


Immunofluorescence analysis of rat-kidney tissue. 1, NOS2 Polyclonal Antibody (red) was diluted at 1:200 (4°C, overnight). 2, Cy3 labeled Secondary antibody was diluted at 1:300 (room temperature, 50min). 3, Picture B: DAPI (blue) 10min. Picture A: Target. Picture B: DAPI. Picture C: merge of A+B

A

B

C

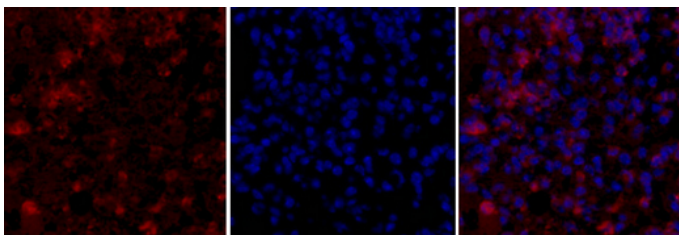


Immunofluorescence analysis of mouse-lung tissue. 1, NOS2 Polyclonal Antibody (red) was diluted at 1:200 (4°C, overnight). 2, Cy3 labeled Secondary antibody was diluted at 1:300 (room temperature, 50min). 3, Picture B: DAPI (blue) 10min. Picture A: Target. Picture B: DAPI. Picture C: merge of A+B

A

B

C

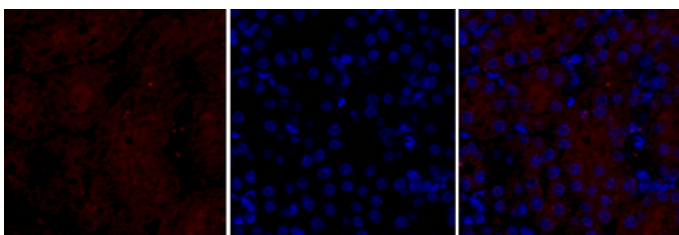


Immunofluorescence analysis of mouse-lung tissue. 1, NOS2 Polyclonal Antibody (red) was diluted at 1:200 (4°C, overnight). 2, Cy3 labeled Secondary antibody was diluted at 1:300 (room temperature, 50min). 3, Picture B: DAPI (blue) 10min. Picture A: Target. Picture B: DAPI. Picture C: merge of A+B

A

B

C

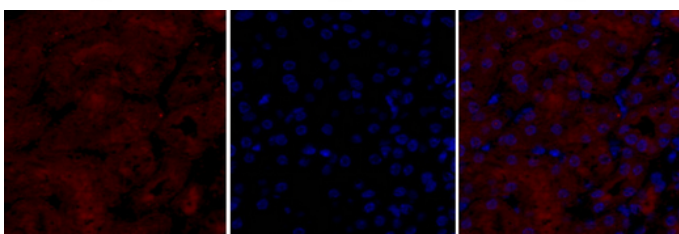


Immunofluorescence analysis of mouse-kidney tissue. 1, NOS2 Polyclonal Antibody (red) was diluted at 1:200 (4°C, overnight). 2, Cy3 labeled Secondary antibody was diluted at 1:300 (room temperature, 50min). 3, Picture B: DAPI (blue) 10min. Picture A: Target. Picture B: DAPI. Picture C: merge of A+B

A

B

C



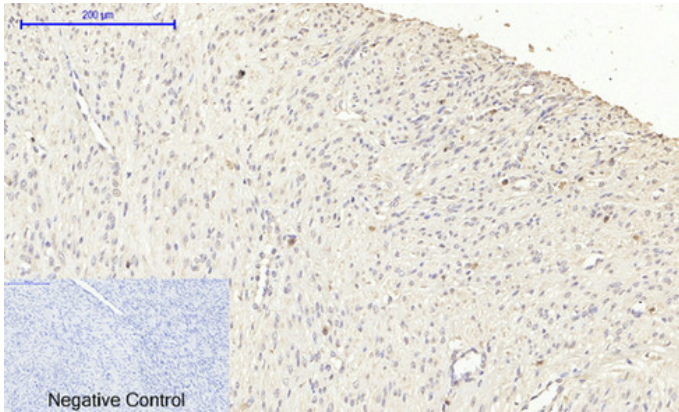
Immunofluorescence analysis of mouse-kidney tissue. 1, NOS2 Polyclonal Antibody (red) was diluted at 1:200 (4°C, overnight). 2, Cy3 labeled Secondary antibody was diluted at 1:300 (room temperature, 50min). 3, Picture B: DAPI (blue) 10min. Picture A: Target. Picture B: DAPI. Picture C: merge of A+B

A

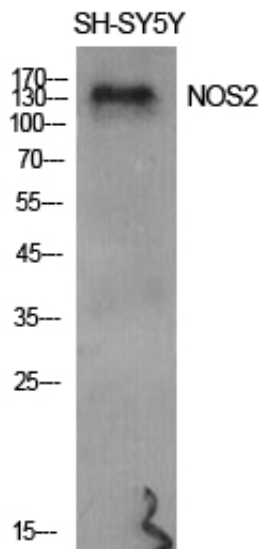
B

C

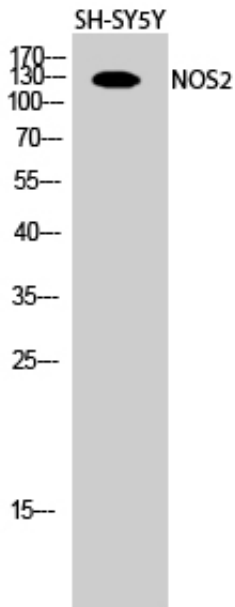
Immunohistochemical analysis of paraffin-embedded Human-uterus-cancer tissue. 1, NOS2 Polyclonal Antibody was diluted at 1:200 (4°C, overnight). 2, Sodium citrate pH 6.0 was used for antibody



retrieval(>98°C,20min). 3,Secondary antibody was diluted at 1:200(room temperature, 30min). Negative control was used by secondary antibody only.

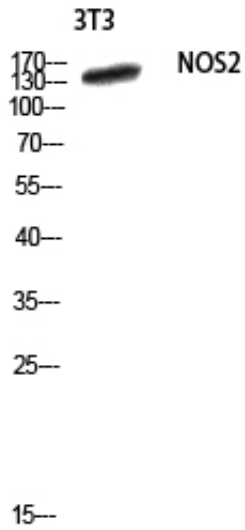


Western Blot analysis of various cells using NOS2 Polyclonal Antibody diluted at 1 : 500

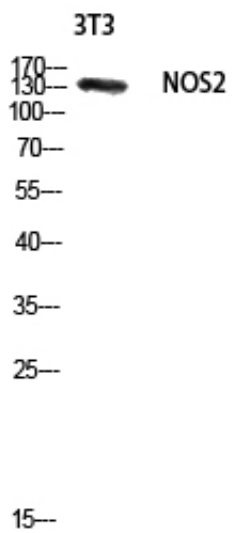


Western Blot analysis of SH-SY5Y cells using NOS2 Polyclonal Antibody diluted at 1 : 500

Western blot analysis of 3T3 lysis using NOS2 antibody. Antibody was diluted at 1:500



Western blot analysis of 3T3 lysis using NOS2 antibody.  
Antibody was diluted at 1:500



Western blot analysis of 3T3 lysis using NOS2 antibody.  
Antibody was diluted at 1:500

