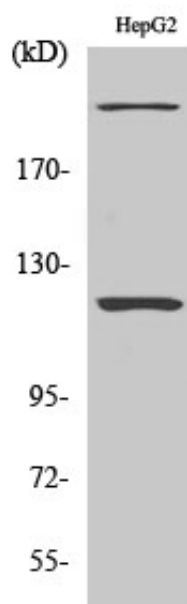


NP220 Polyclonal Antibody

Catalog_no :	AT3177
Applications :	WB,IHC-p,ELISA
Reactivity :	Human
Category :	抗原抗体
Size :	100µg/50µg/20µg
Gene_name :	ZNF638
Protein_name :	Zinc finger protein 638
Humangene_id :	27332
Humanswissprot_no :	Q14966
Immunogen :	The antiserum was produced against synthesized peptide derived from human ZNF638. AA range:1271-1320
Specificity :	NP220 Polyclonal Antibody detects endogenous levels of NP220 protein.
Formulation :	Liquid in PBS containing 50% glycerol, 0.5% BSA and 0.02% sodium azide.
Source :	Rabbit
Dilution :	Western Blot: 1/500 - 1/2000. Immunohistochemistry: 1/100 - 1/300. ELISA: 1/20000. Not yet tested in other applications.
Purification :	The antibody was affinity-purified from rabbit antiserum by affinity-chromatography using epitope-specific immunogen.
Concentration :	1 mg/ml
Storage_stability :	-20°C/1 year
Msds :	MSDS_Antibody.pdf
Other_name :	ZNF638; NP220; ZFML; Zinc finger protein 638; Cutaneous T-cell lymphoma-associated antigen se33-1; CTCL-associated antigen se33-1; Nuclear protein 220; Zinc finger matrix-like protein
Molecular Weight :	220KD

Product Images



Western Blot analysis of various cells using NP220 Polyclonal Antibody